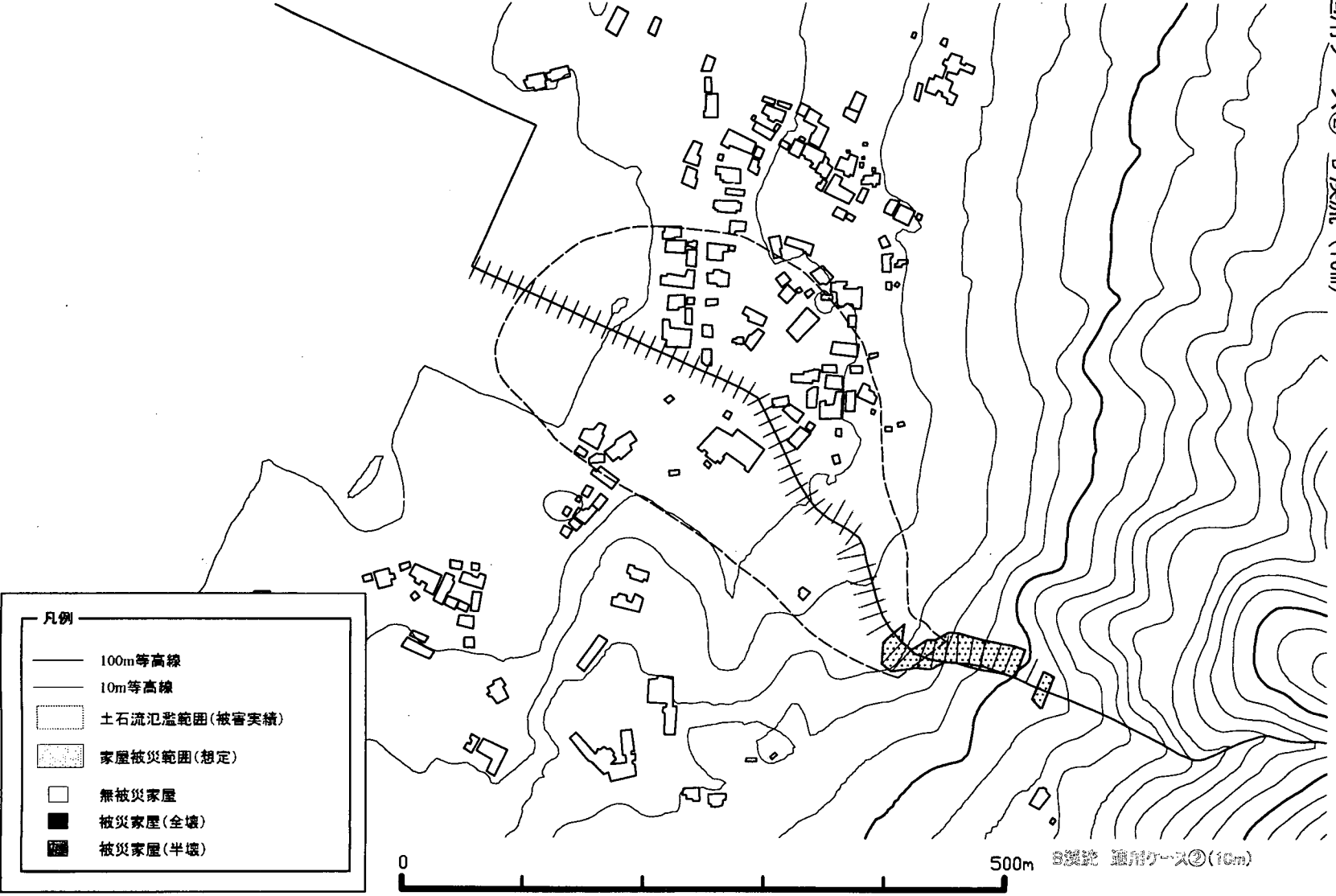


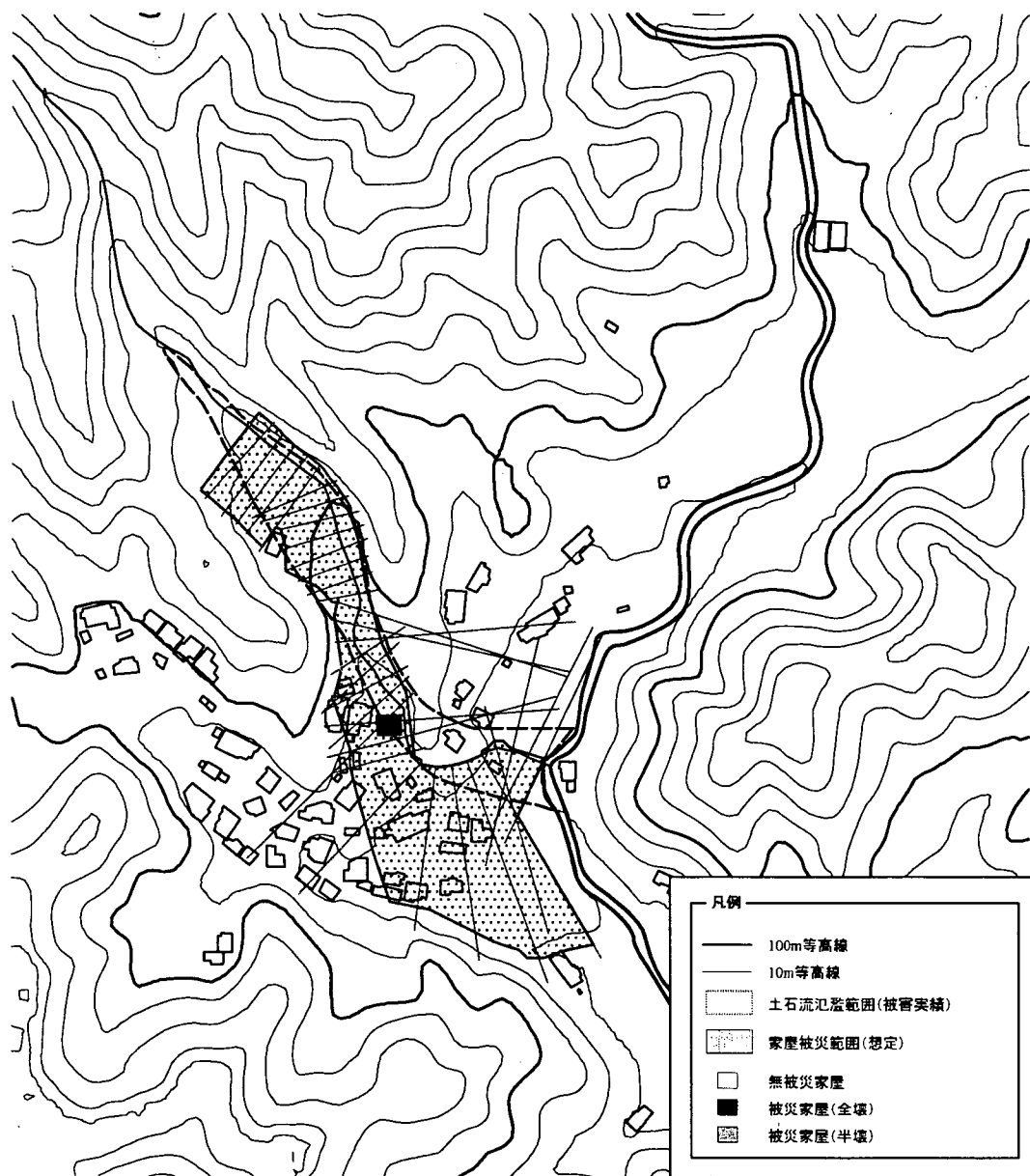
適用ケース② B: 溪流 (10m)



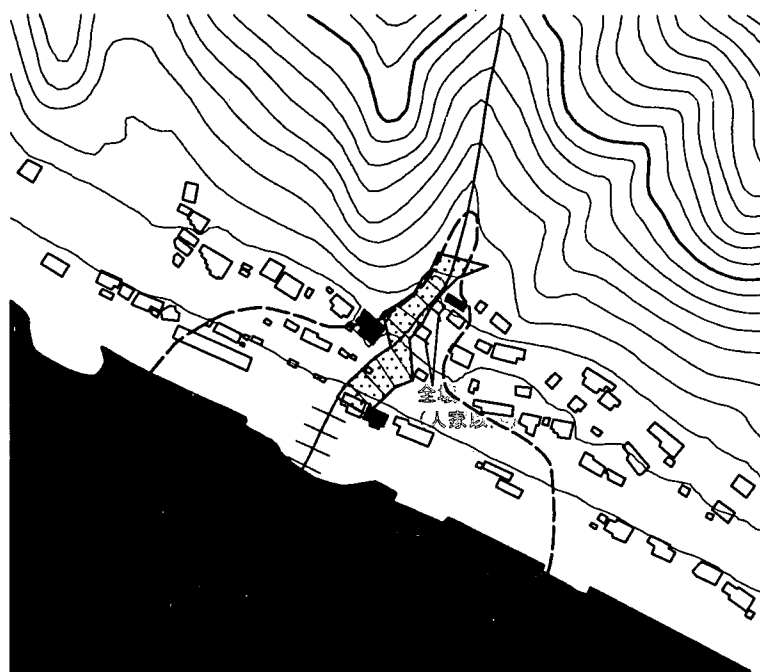
- 凡例 —
- 100m等高線
 - 10m等高線
 - 土石流氾濫範囲(被害実績)
 - 家屋被災範囲(想定)
 - 無被災家屋
 - 被災家屋(全壊)
 - 被災家屋(半壊)

0 500m 適用ケース② B: 溪流 (10m)

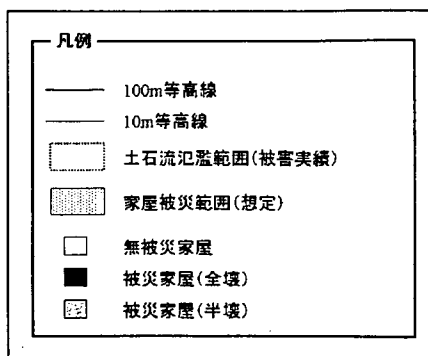
適用ケース② F 溪流 (10m)



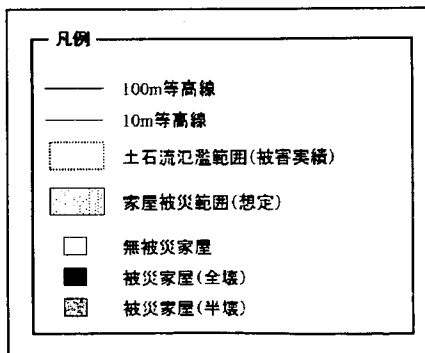
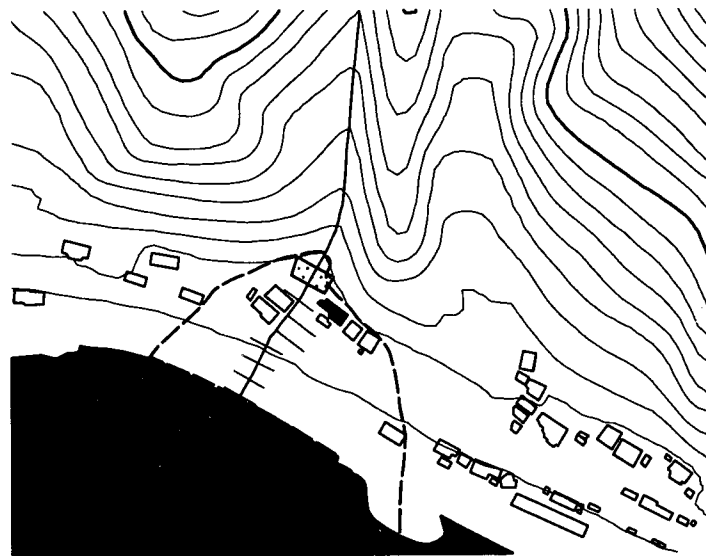
適用ケース② H溪流 (10m)



H溪流 適用ケース②(10m)



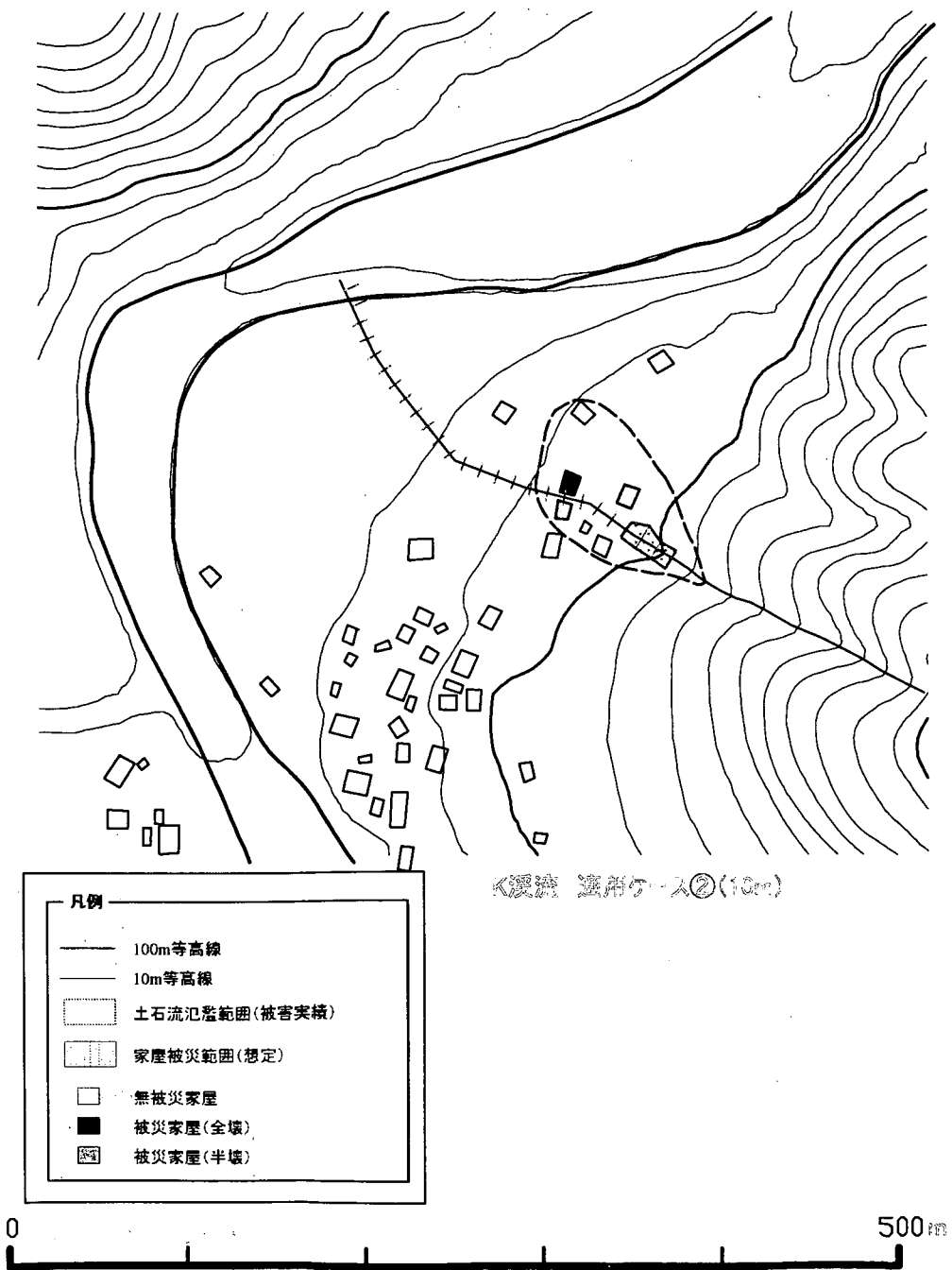
適用ケース② 1 溪流 (10m)



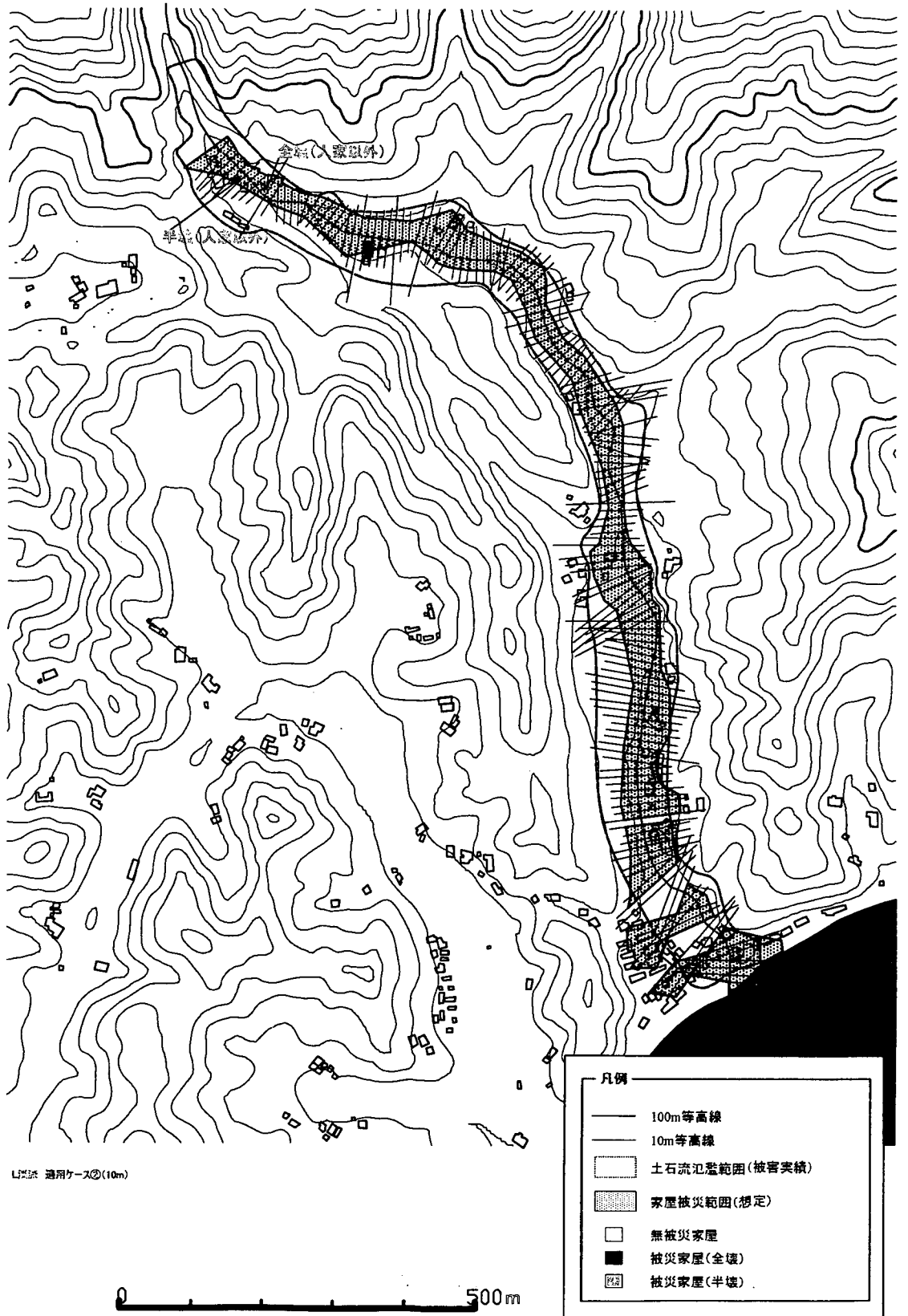
1 溪流 適用ケース②(10m)



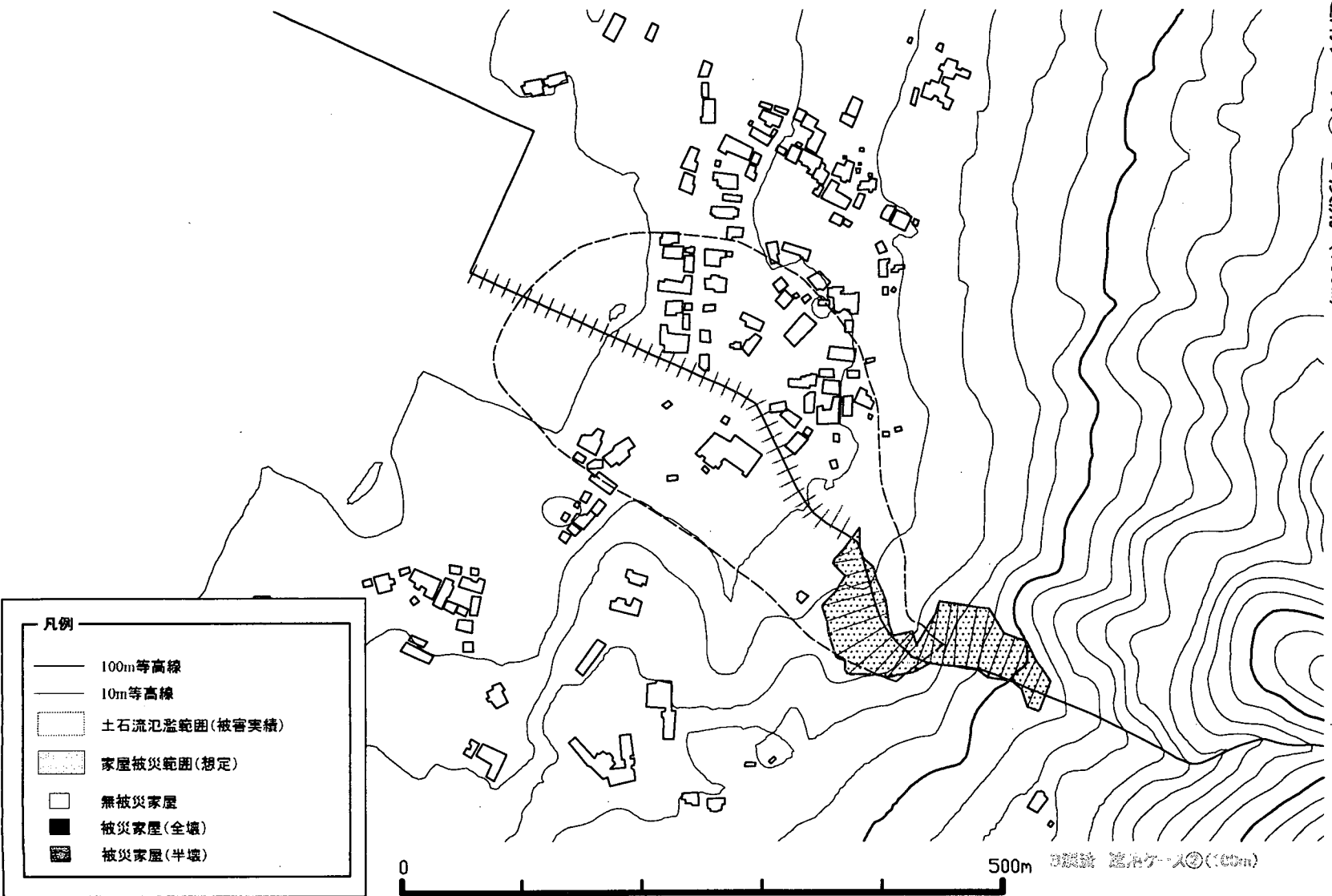
適用ケース② K 溪流 (10m)



適用ケース② L 溪流 (10m)



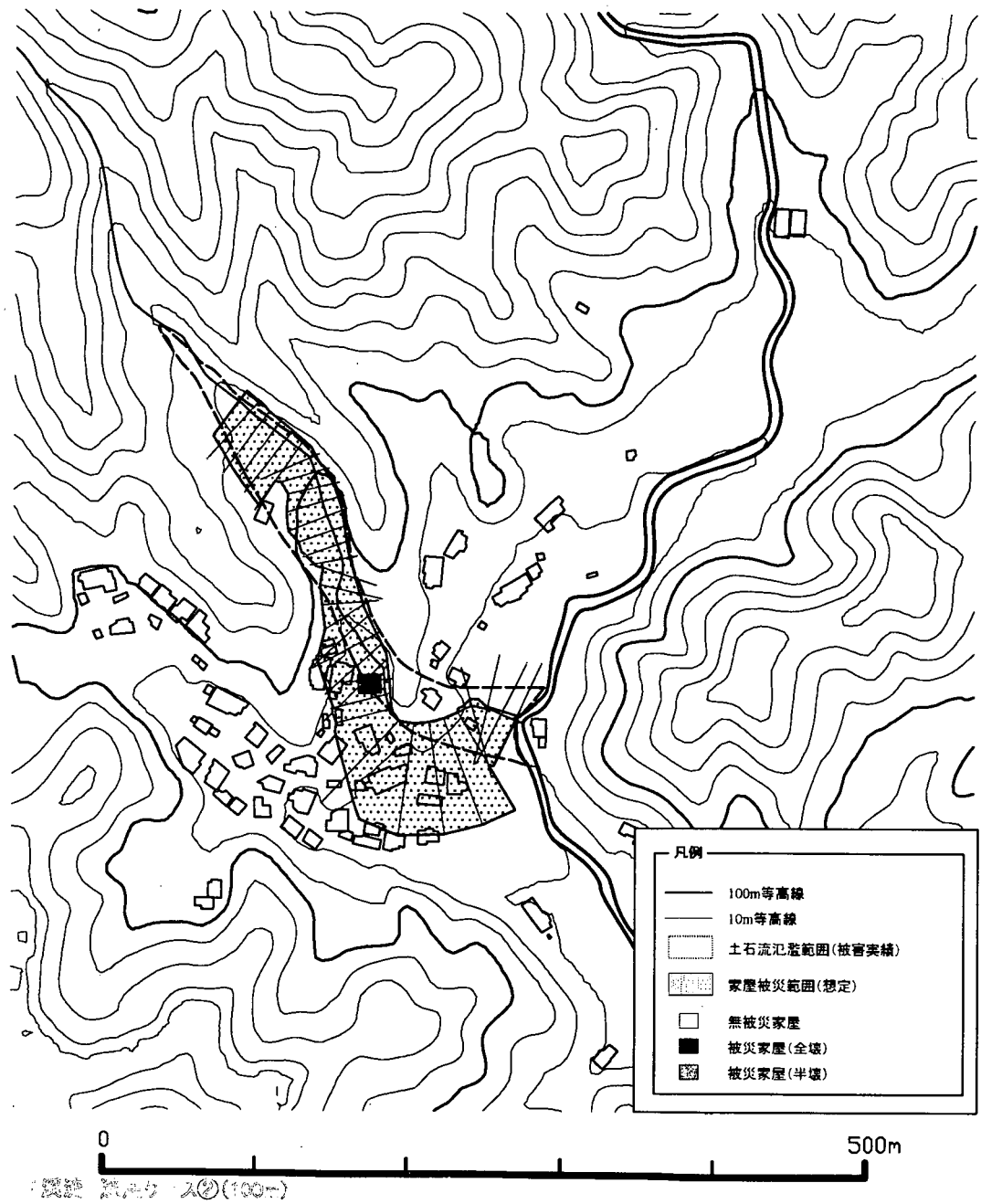
適用ケース② B 溪流 (100m)



凡例

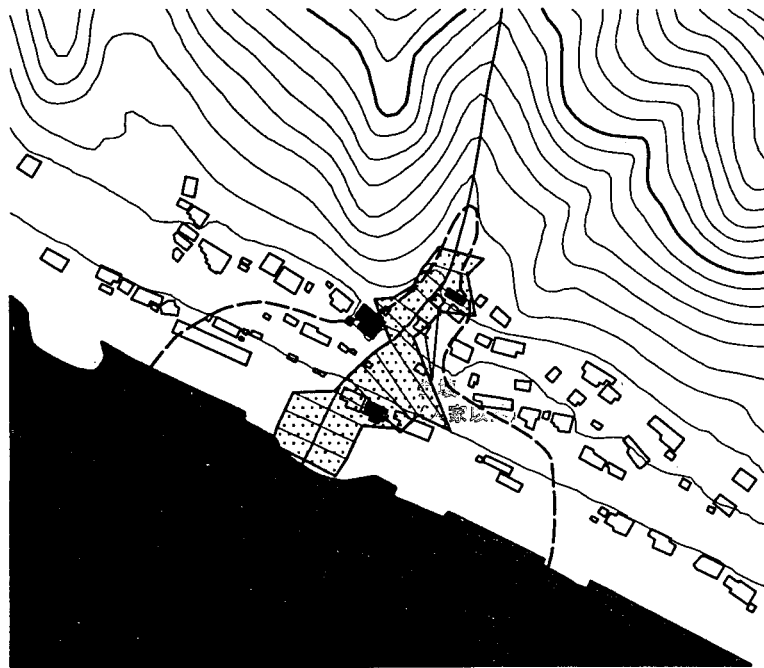
- 100m等高線
- 10m等高線
- ⋯ 土石流氾濫範囲(被害実績)
- ▨ 家屋被災範囲(想定)
- 無被災家屋
- 被災家屋(全壊)
- ▩ 被災家屋(半壊)

適用ケース② F 溪流 (100m)

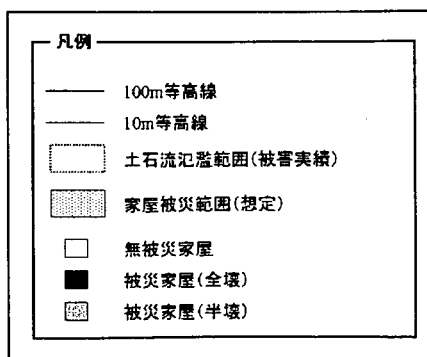


適用ケース② H溪流 (100m)

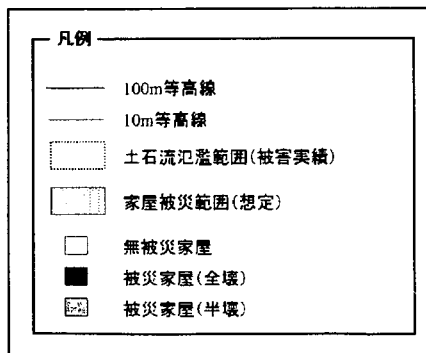
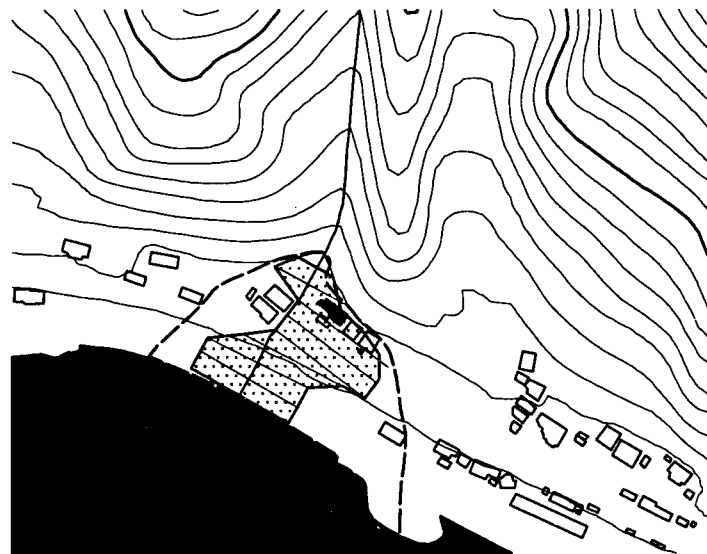
切り方: 上流100m



H溪流 適用ケース②(100m)



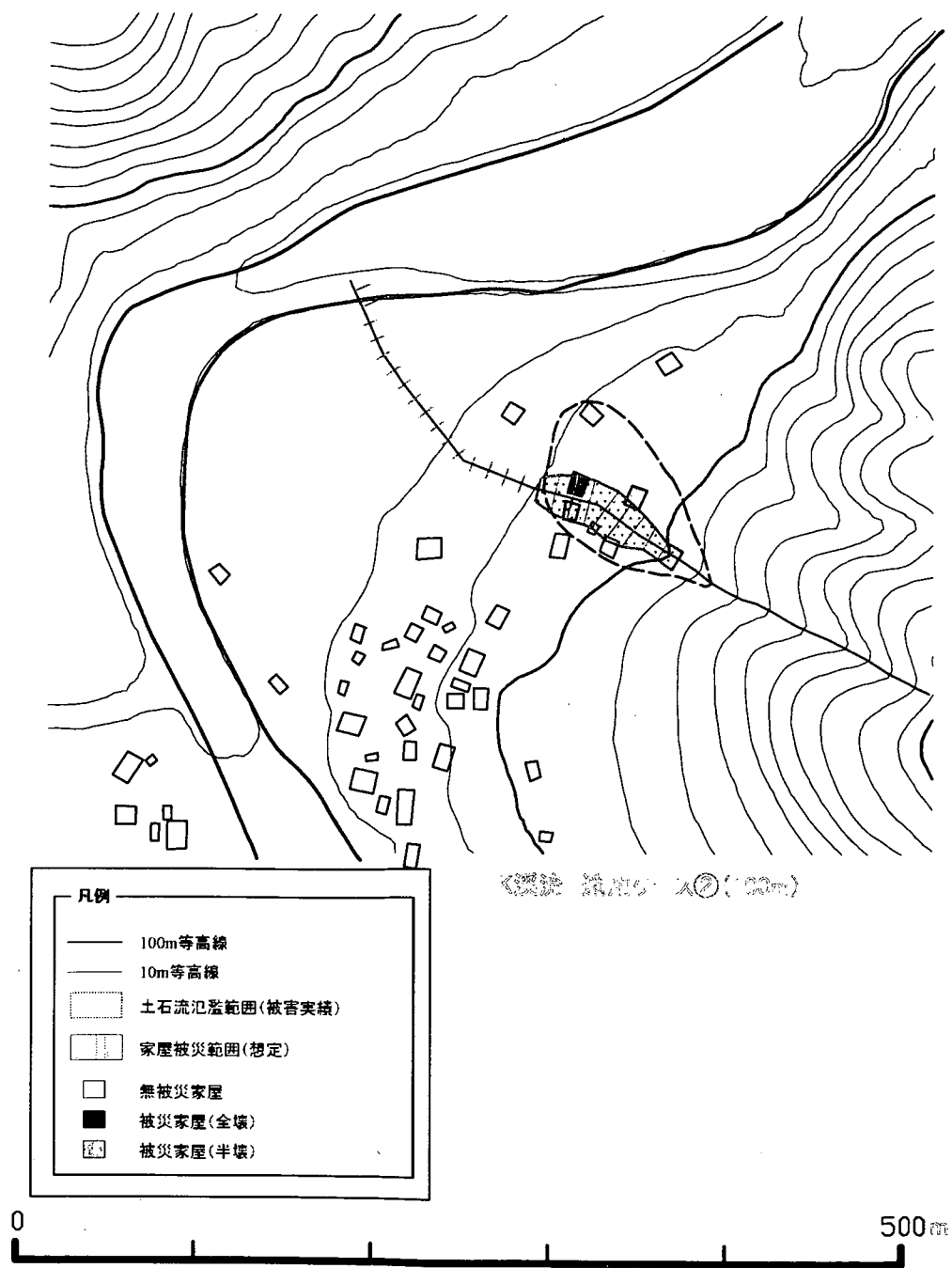
適用ケース② 1 溪流 (100m)



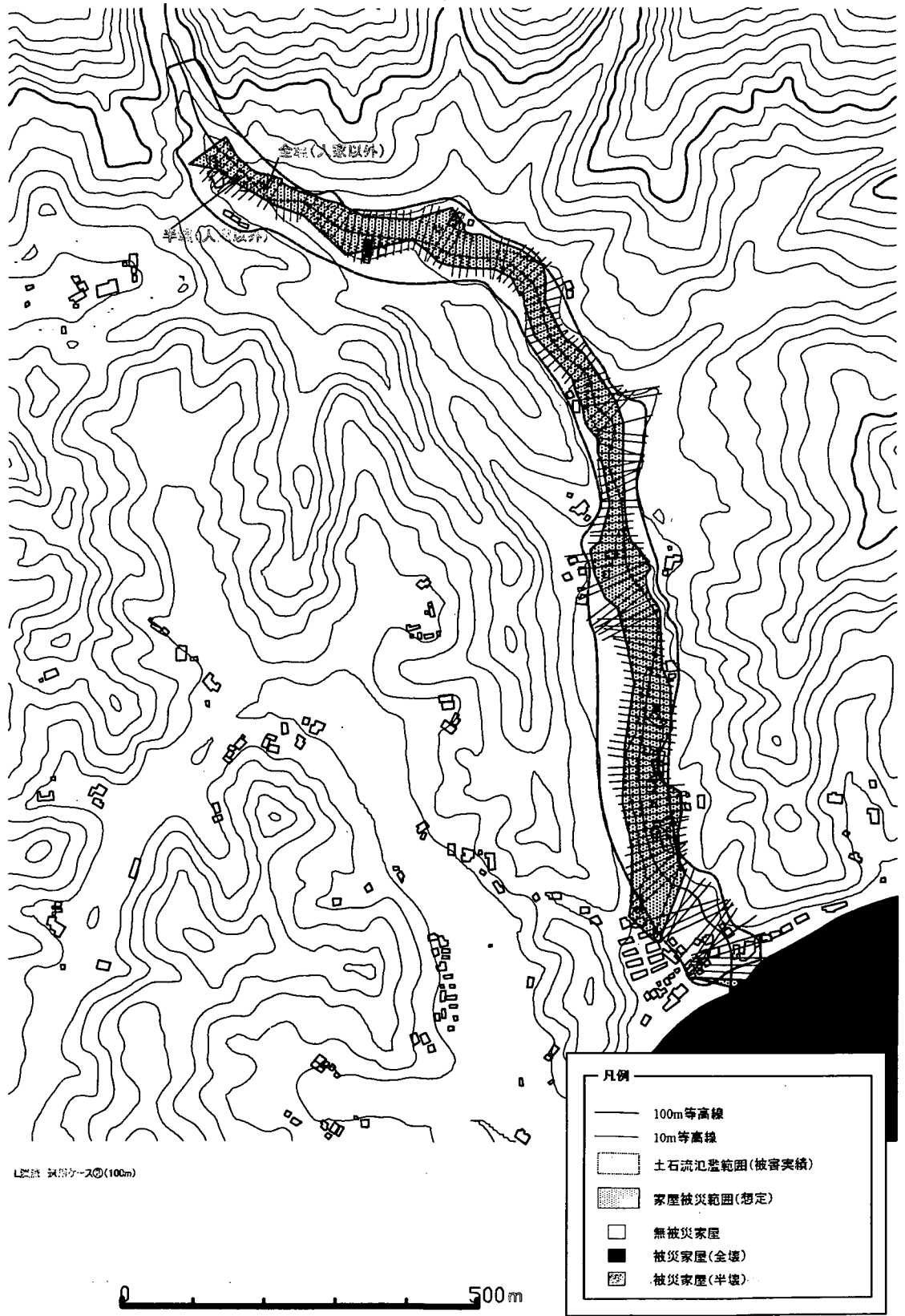
溪流 適用ケース②(100m)



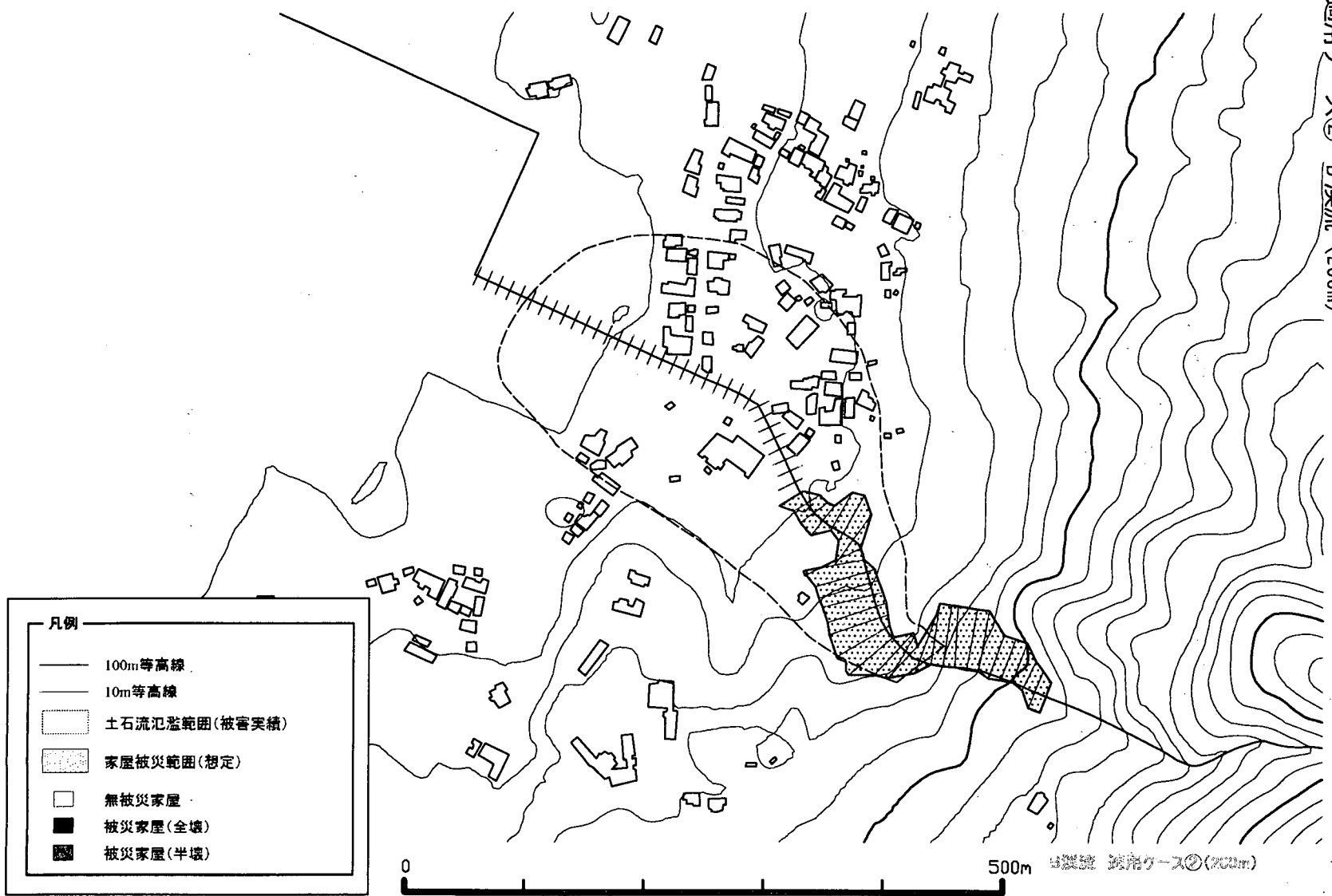
適用ケース② K 溪流 (100m)



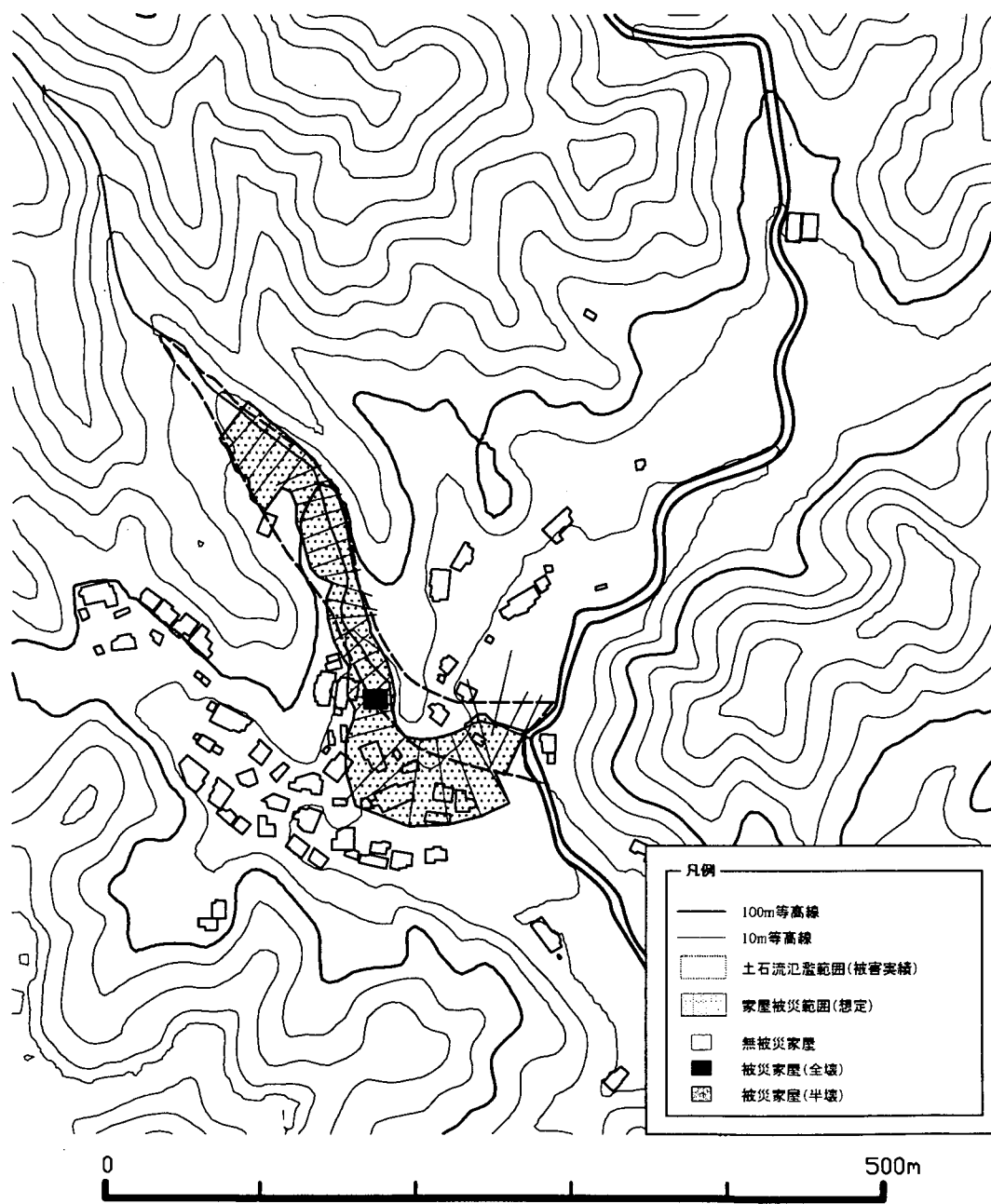
適用ケース② L 溪流 (100m)



適用ケース② B 渓流 (200m)

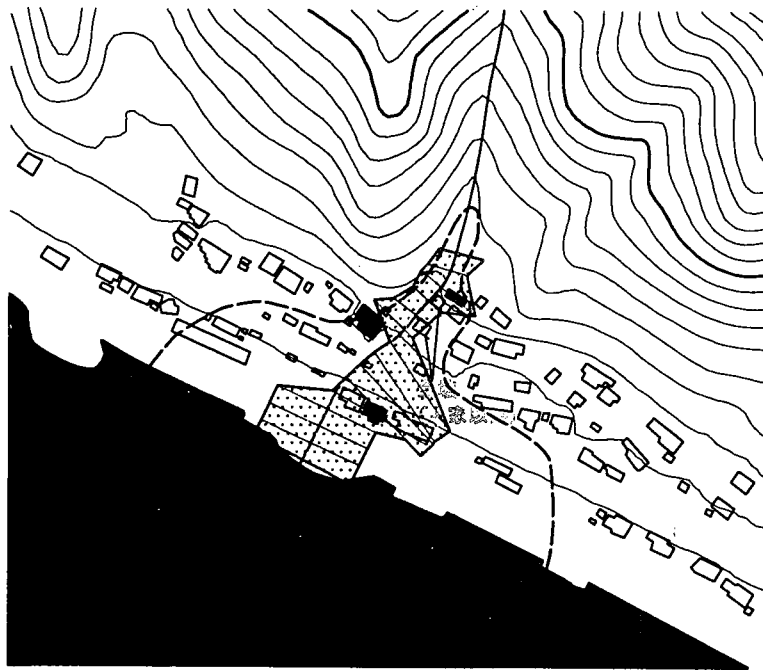


適用ケース② F 溪流 (200m)

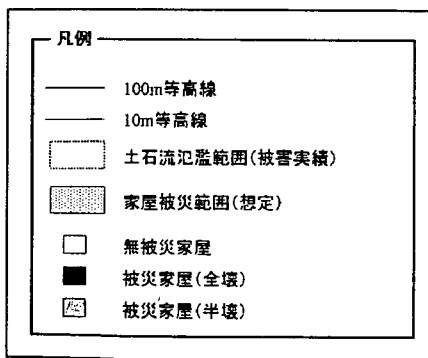


適用ケース② H溪流 (200m)

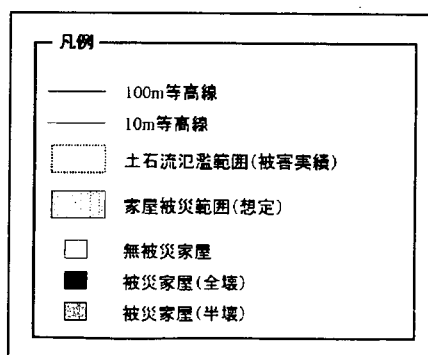
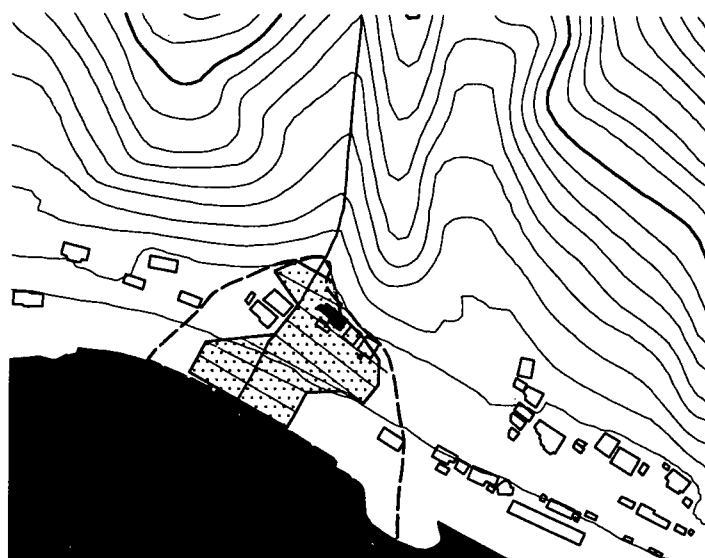
とり方: 上流200m



H溪流 適用ケース②(200m)



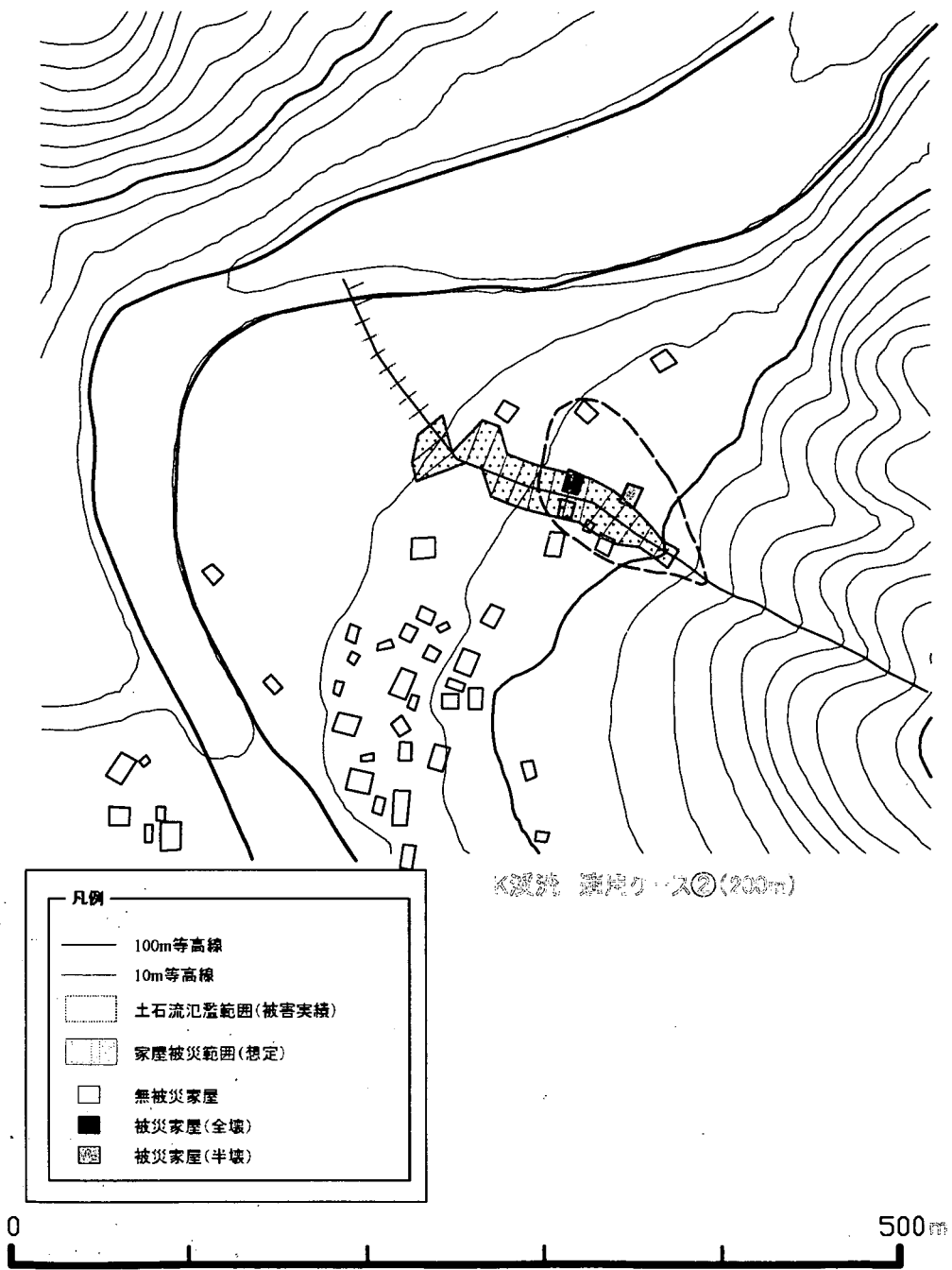
適用ケース② | 溪流 (200m)



1 溪流 適用ケース②(200m)



適用ケース② K 溪流 (200m)



適用ケース② L 溪流 (200m)

