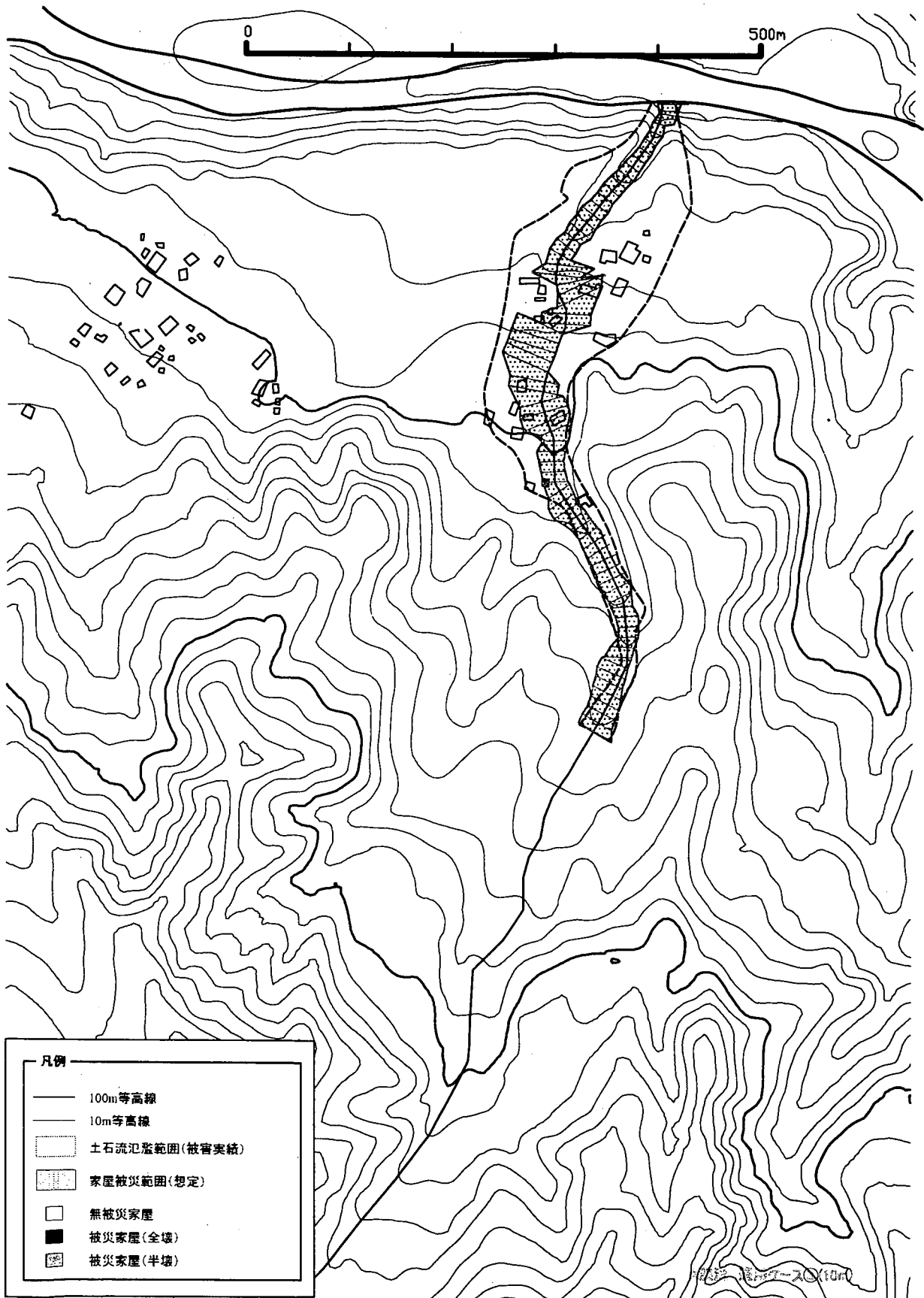
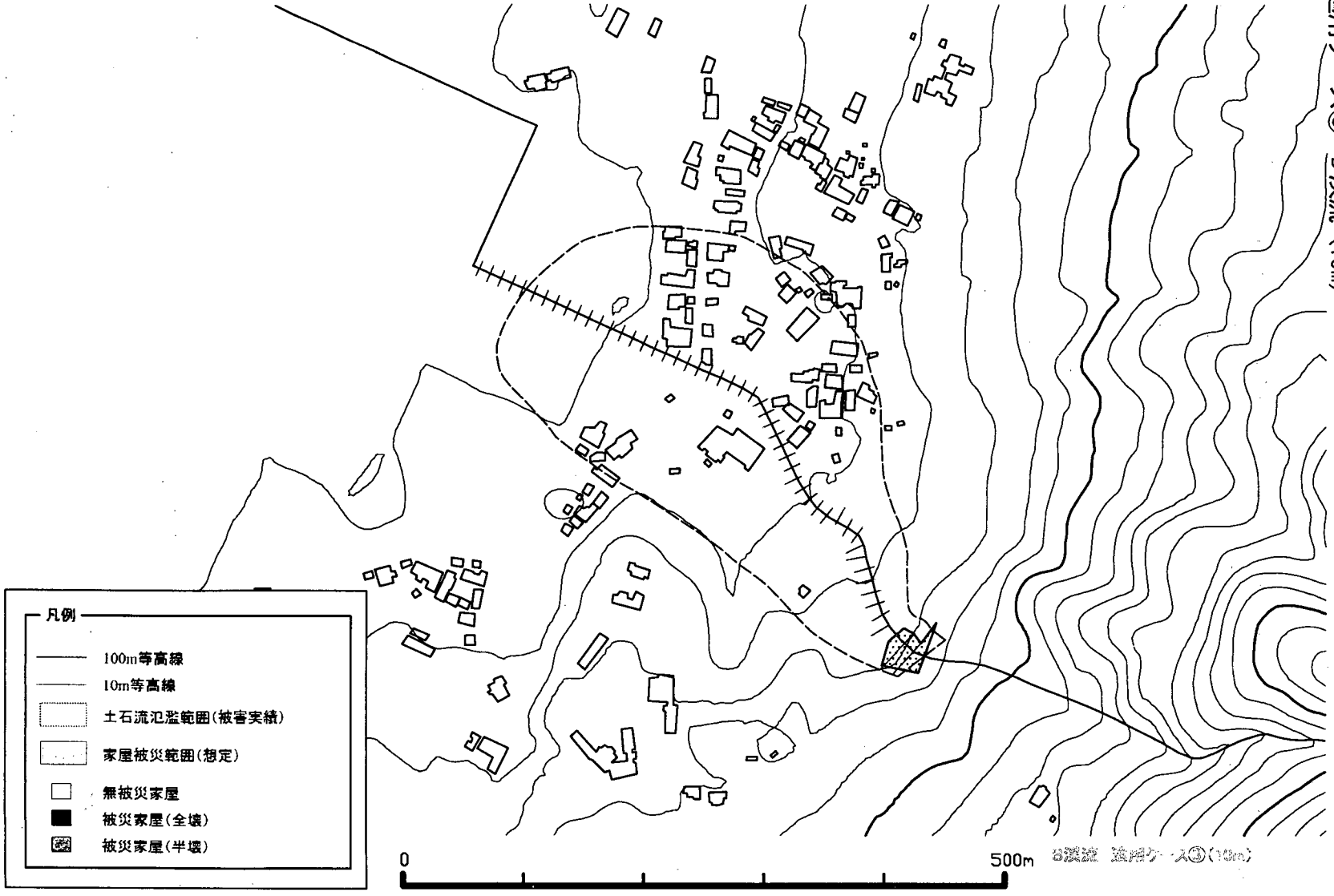


適用ケース③ A 溪流 (10m)



適用ケ一又③ B 溪流 (10m)

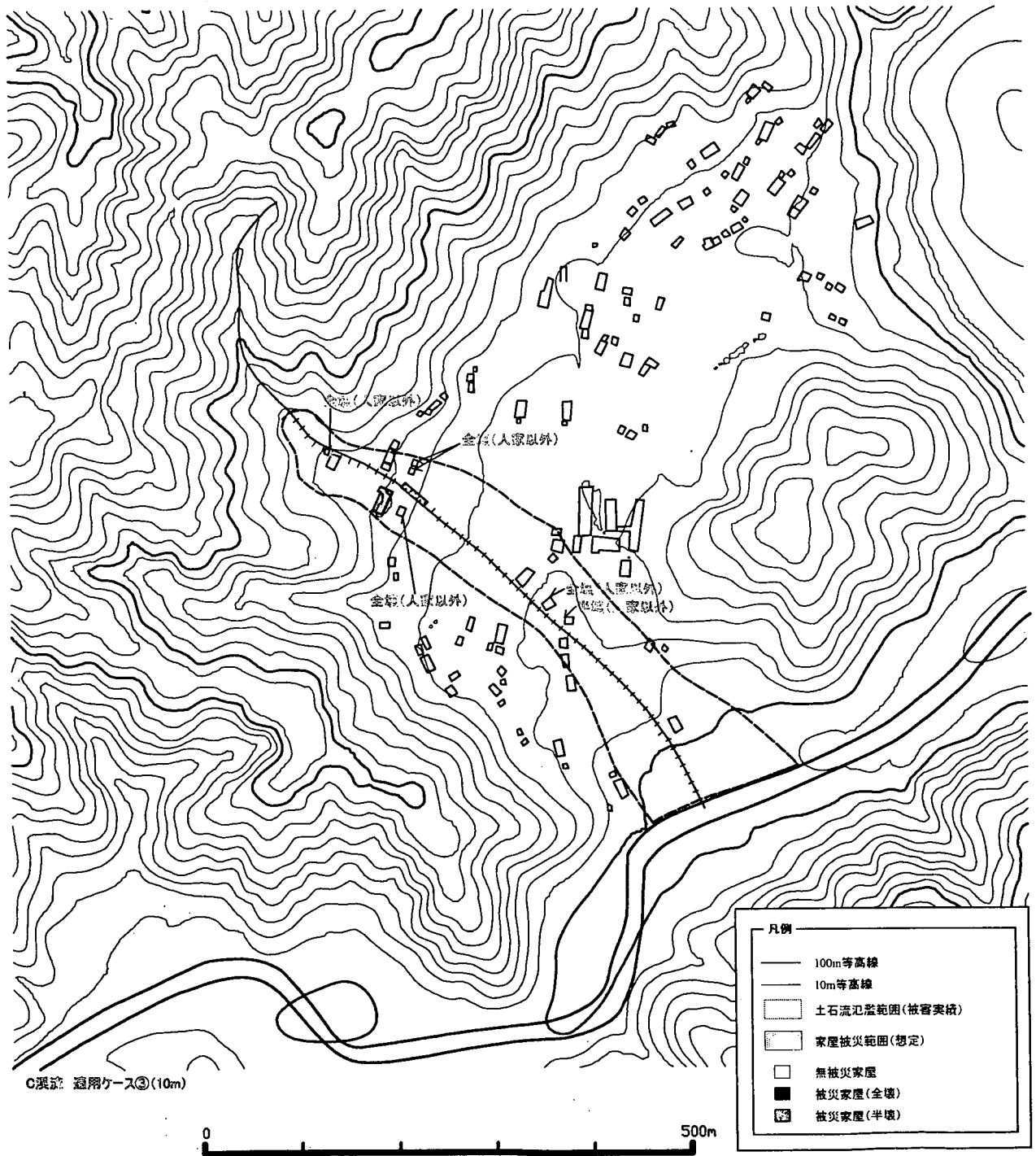


- 凡例
- 100m等高線
 - 10m等高線
 - 土石流氾濫範囲(被害実績)
 - 家屋被災範囲(想定)
 - 無被災家屋
 - 被災家屋(全壊)
 - 被災家屋(半壊)

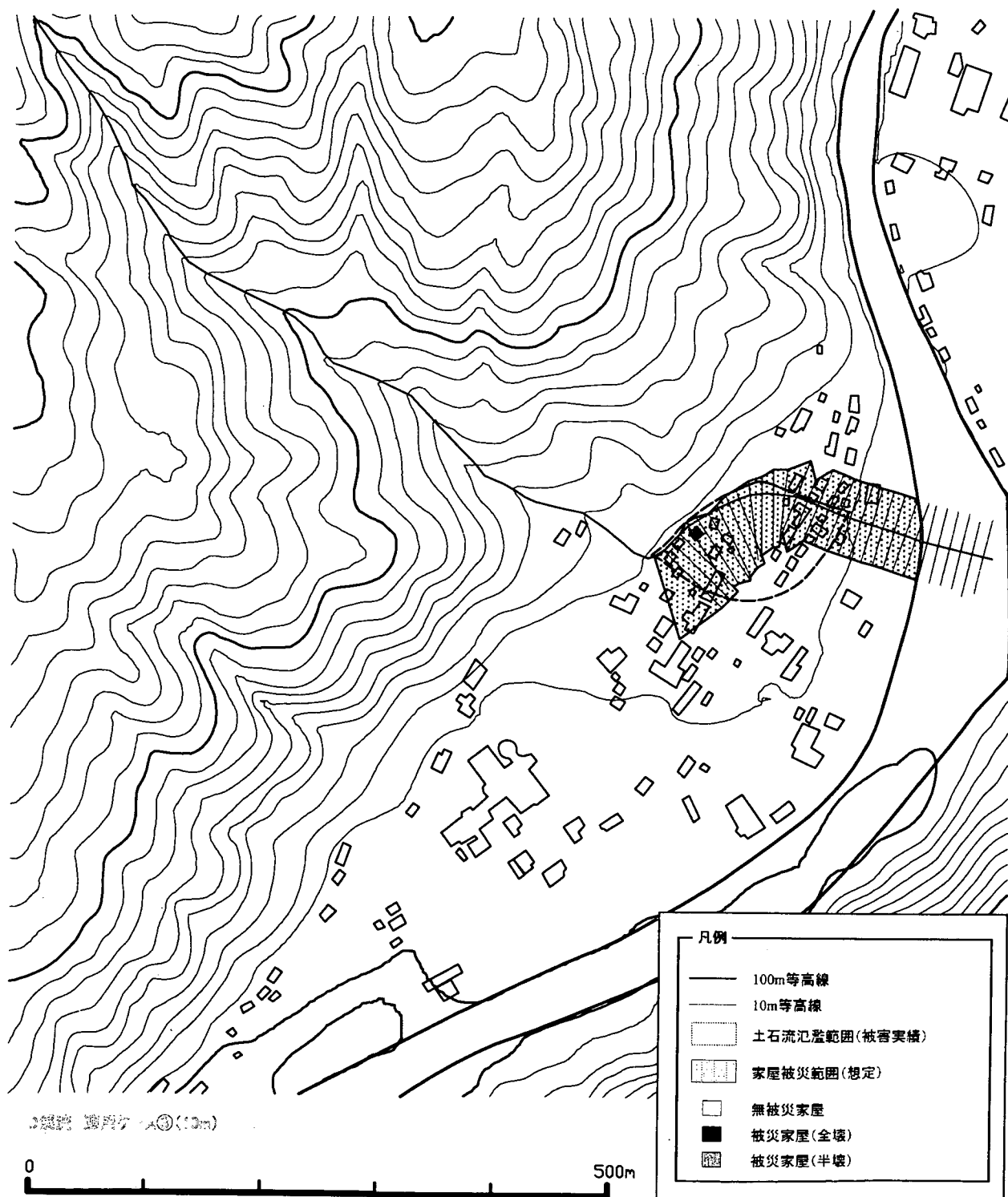
0 500m

B 溪流 適用ケ一又③ (10m)

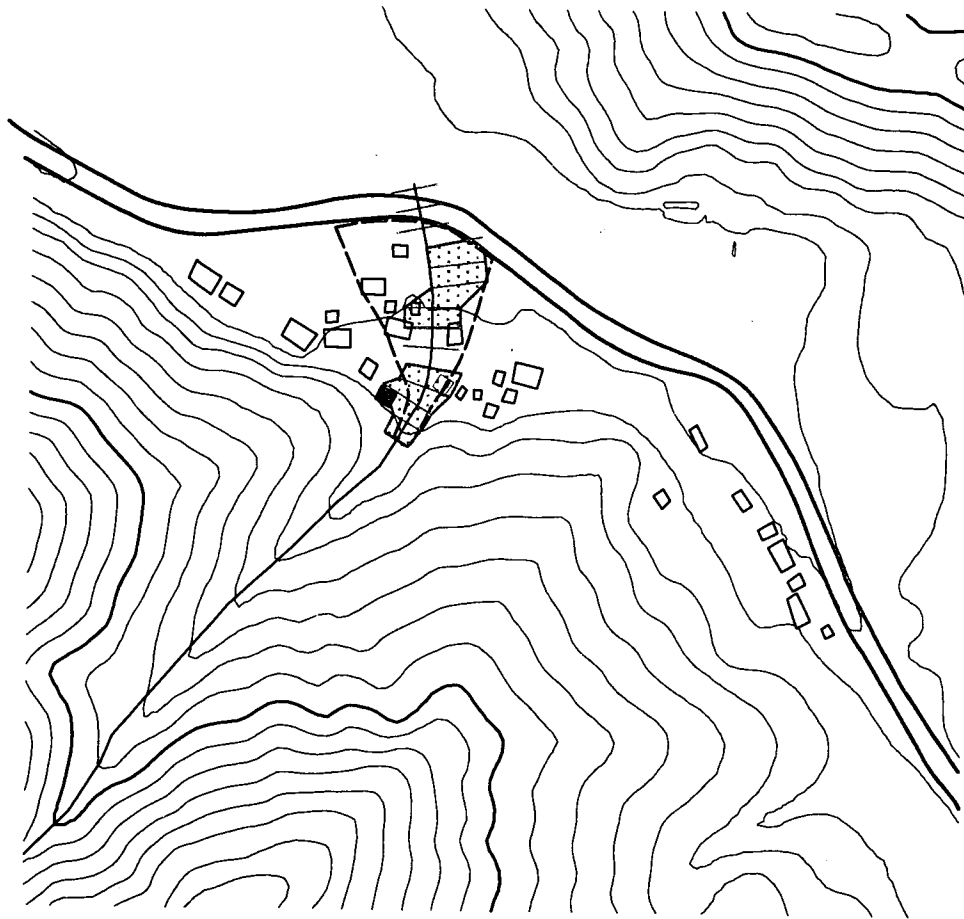
適用ケース③ C 溪流 (10m)



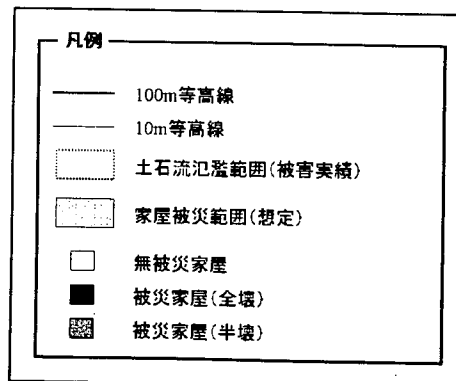
適用ケース③ D 溪流 (10m)



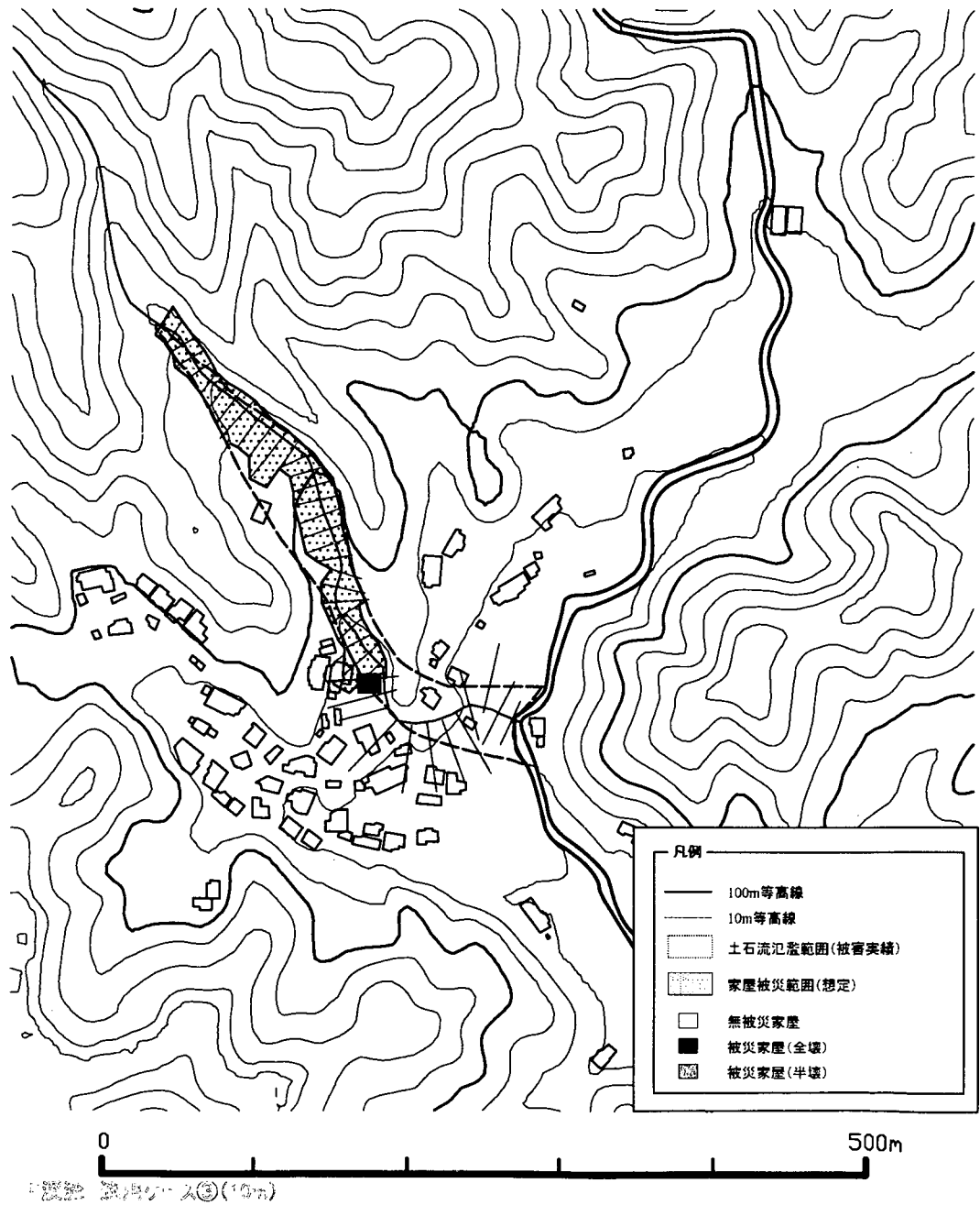
適用ケース③ E 溪流 (10m)



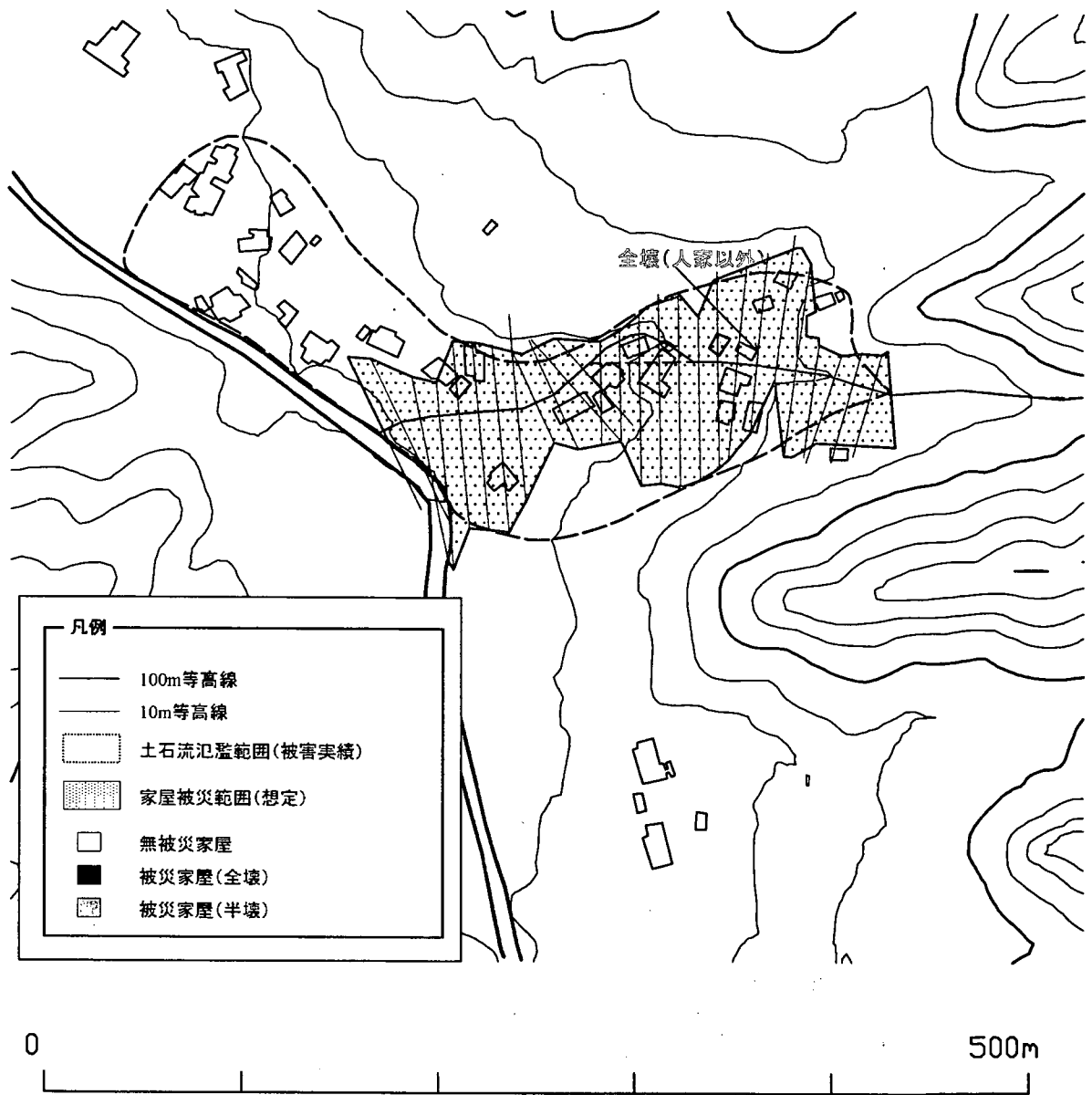
E 溪流 適用ケース③(10m)



適用ケース③ F 溪流 (10m)



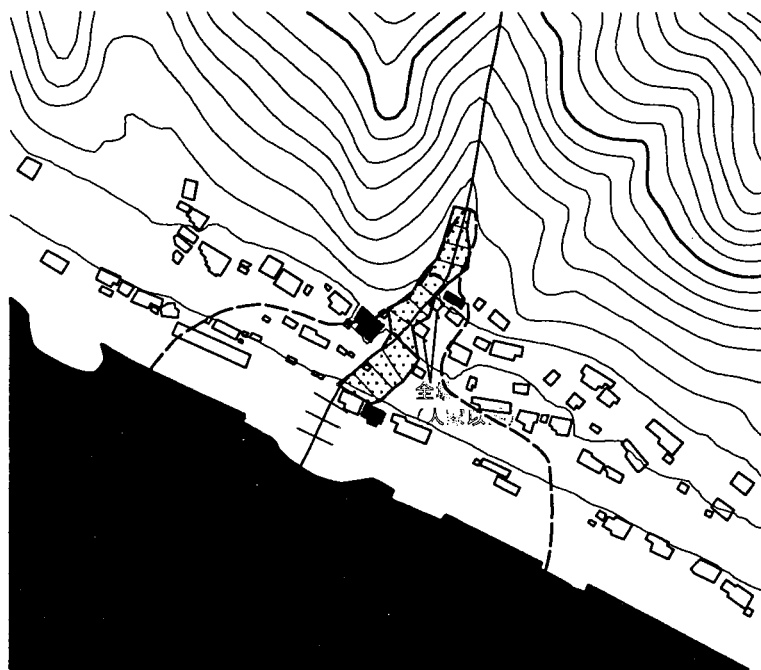
適用ケース③ G 溪流 (10m)



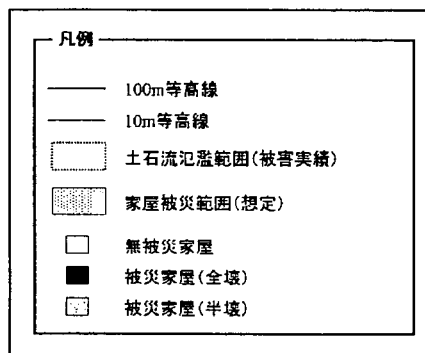
G溪流 適用ケース③(10m)

適用ケース③ H溪流 (10m)

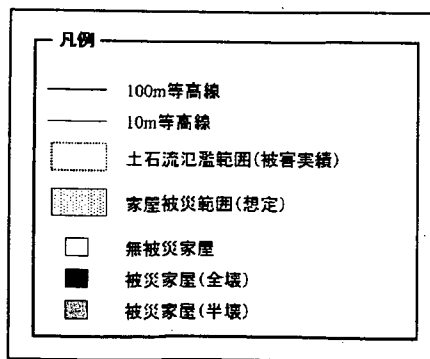
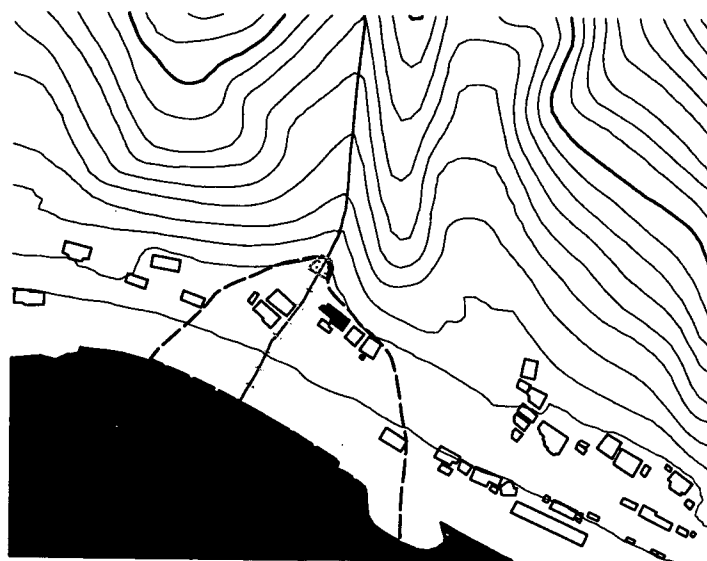
とり方: 上流10m



H溪流 適用ケース③(10m)



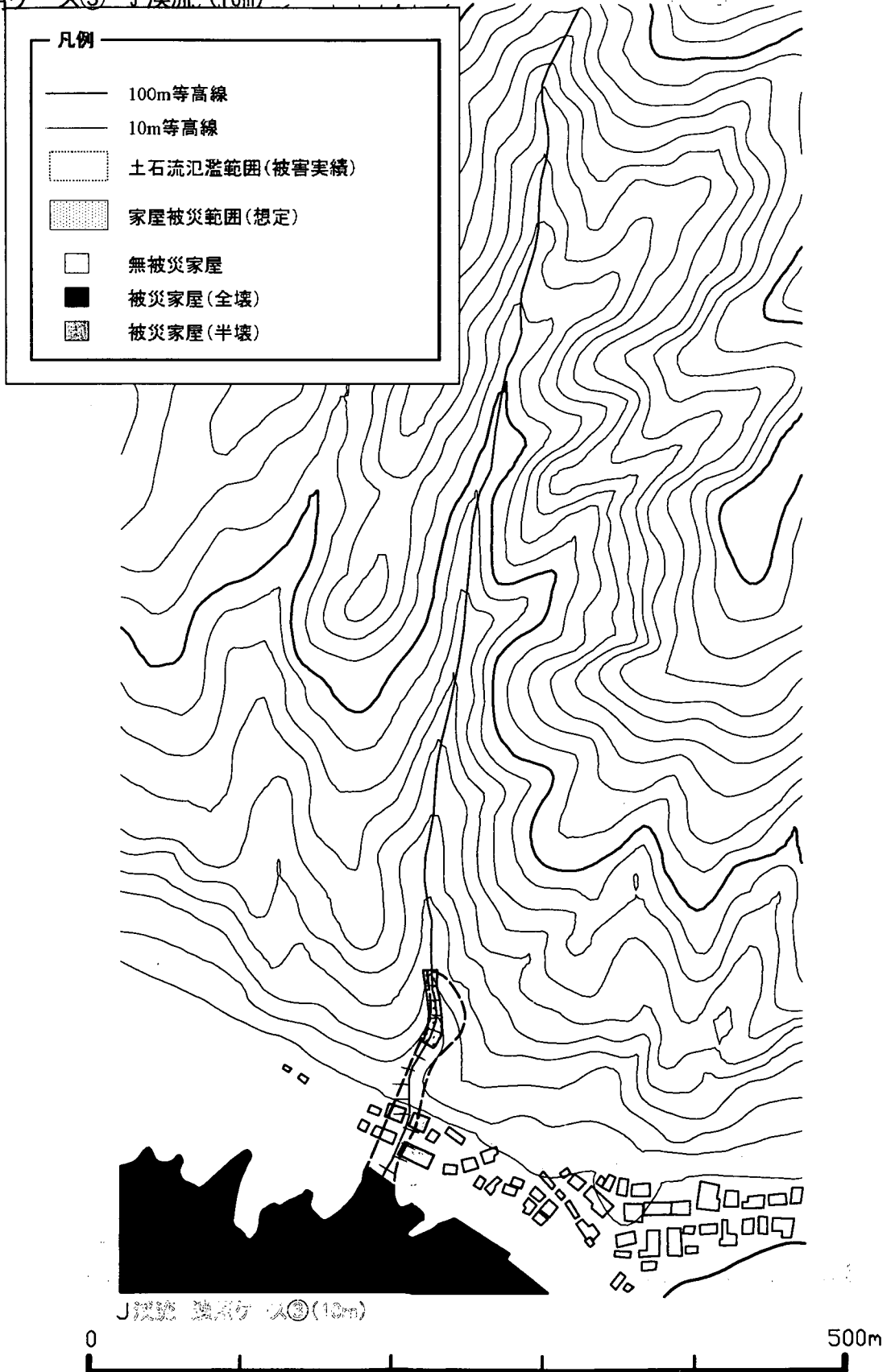
適用ケース③ I 溪流 (10m)



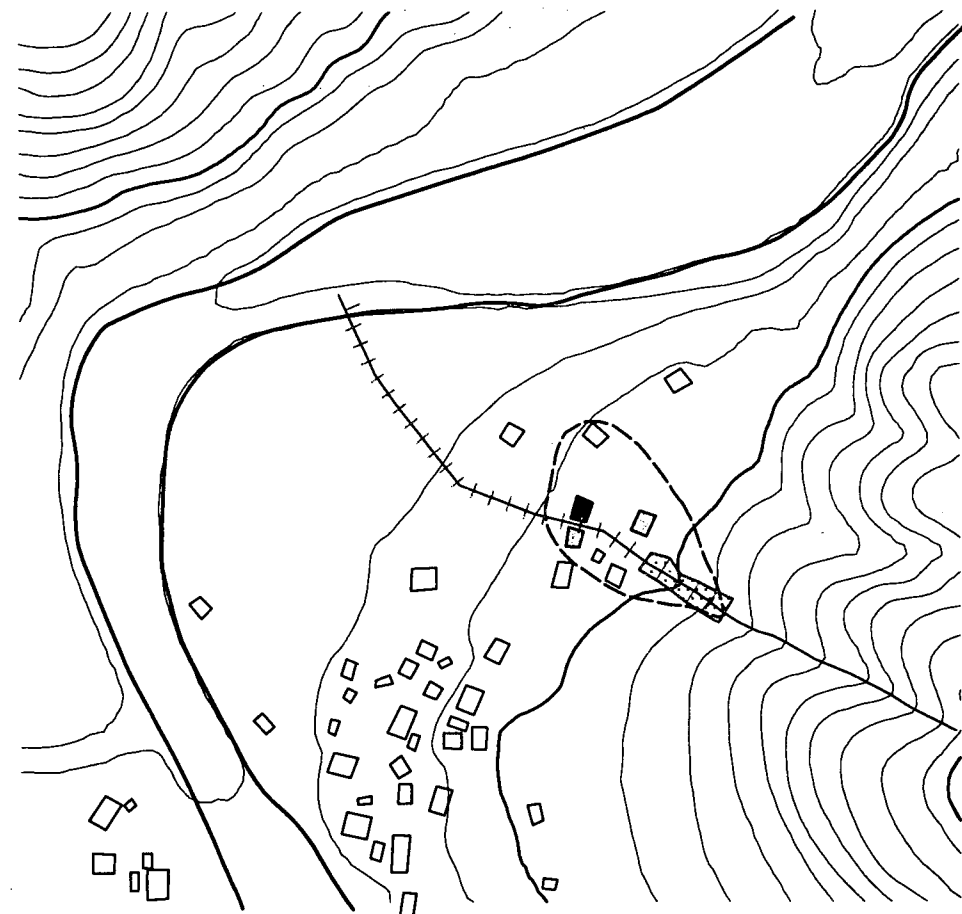
I 溪流 適用ケース③(10m)



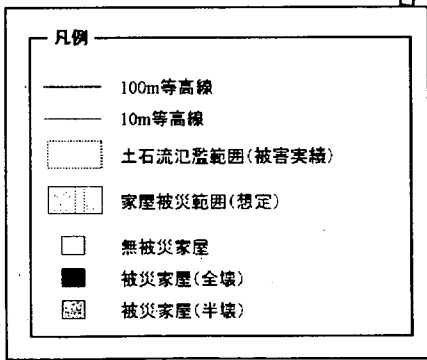
適用ケース③ ↓ 溪流 (10m)



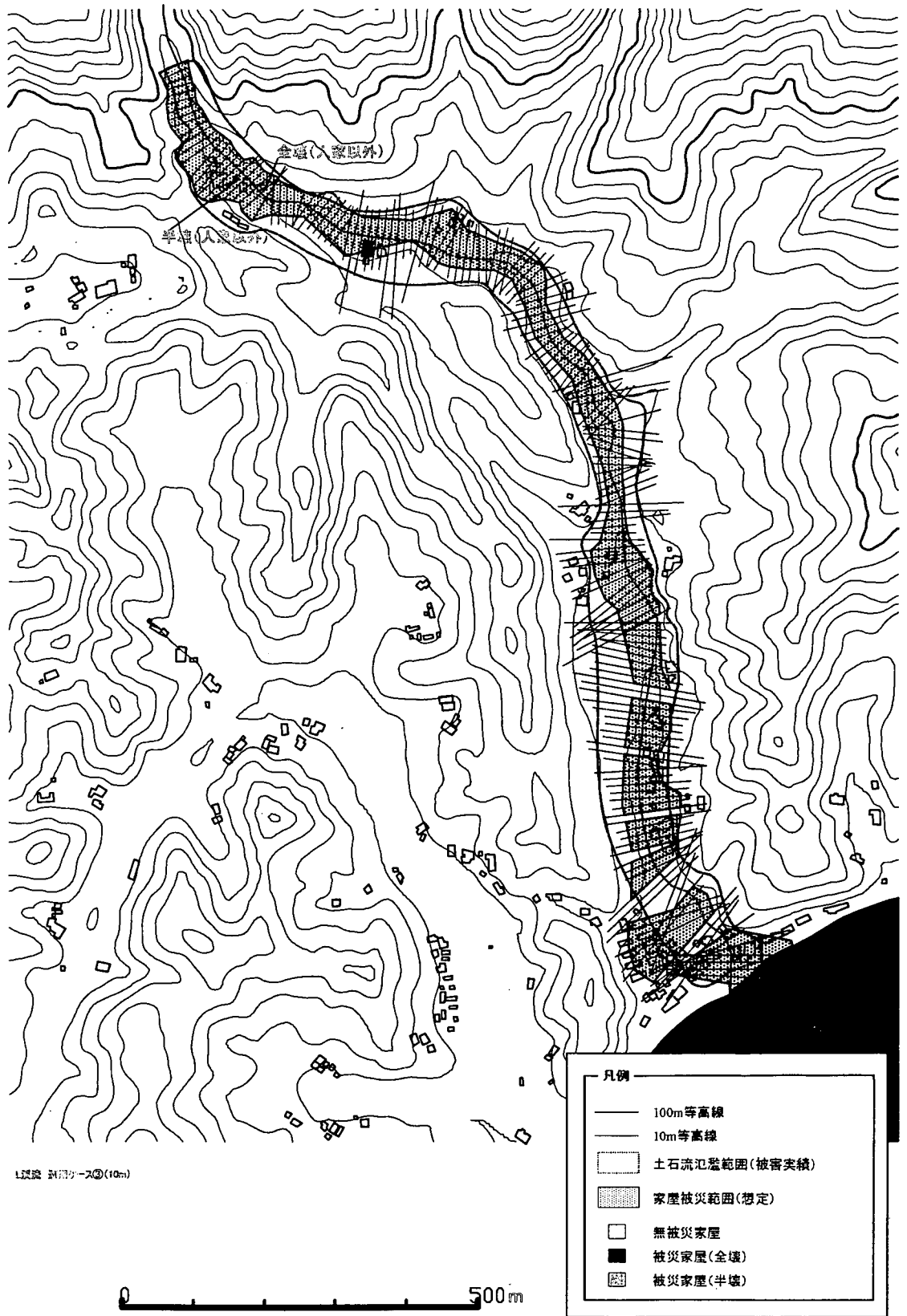
適用ケース③ K溪流 (10m)



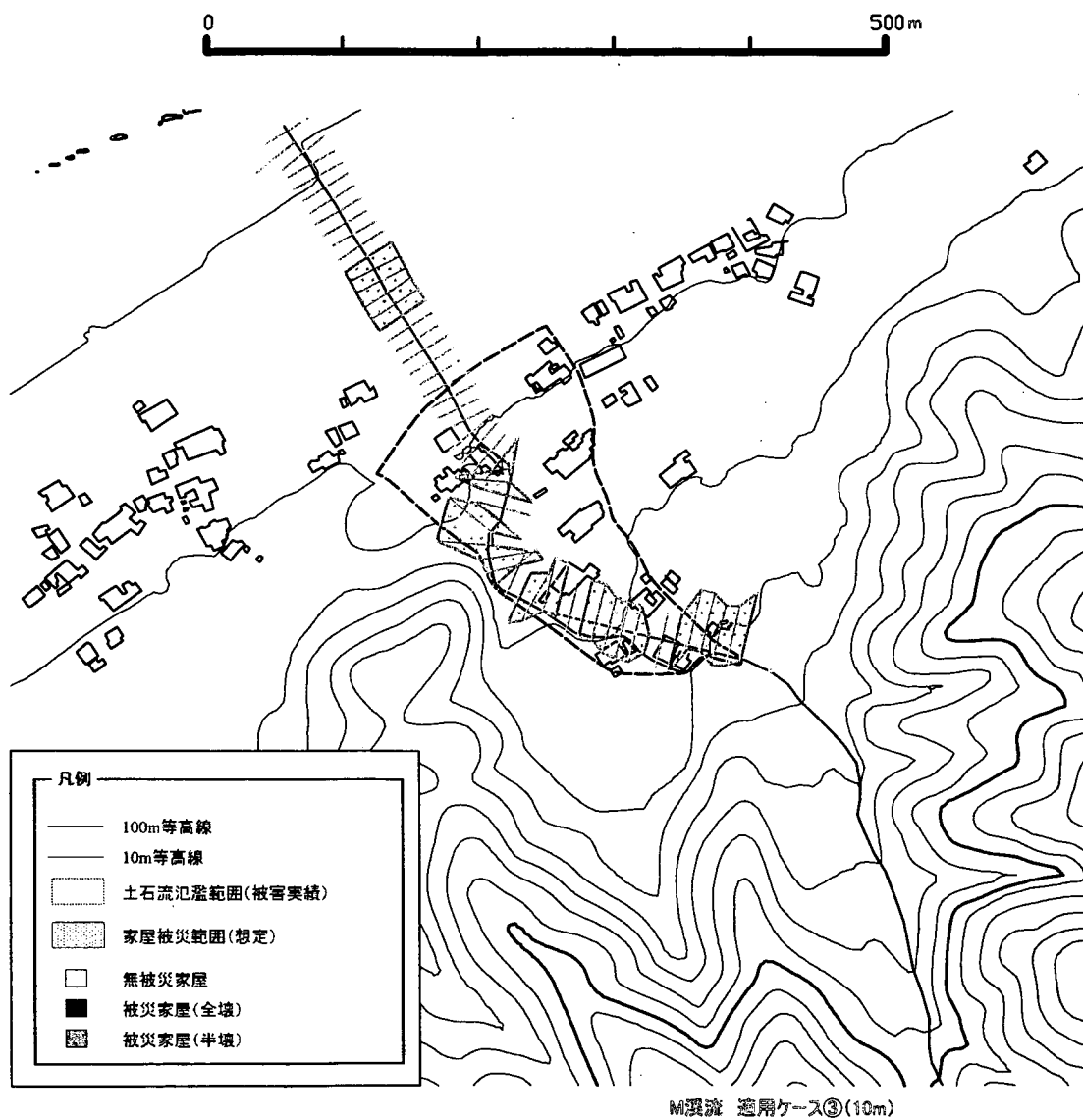
K溪流 適用ケース③(10m)



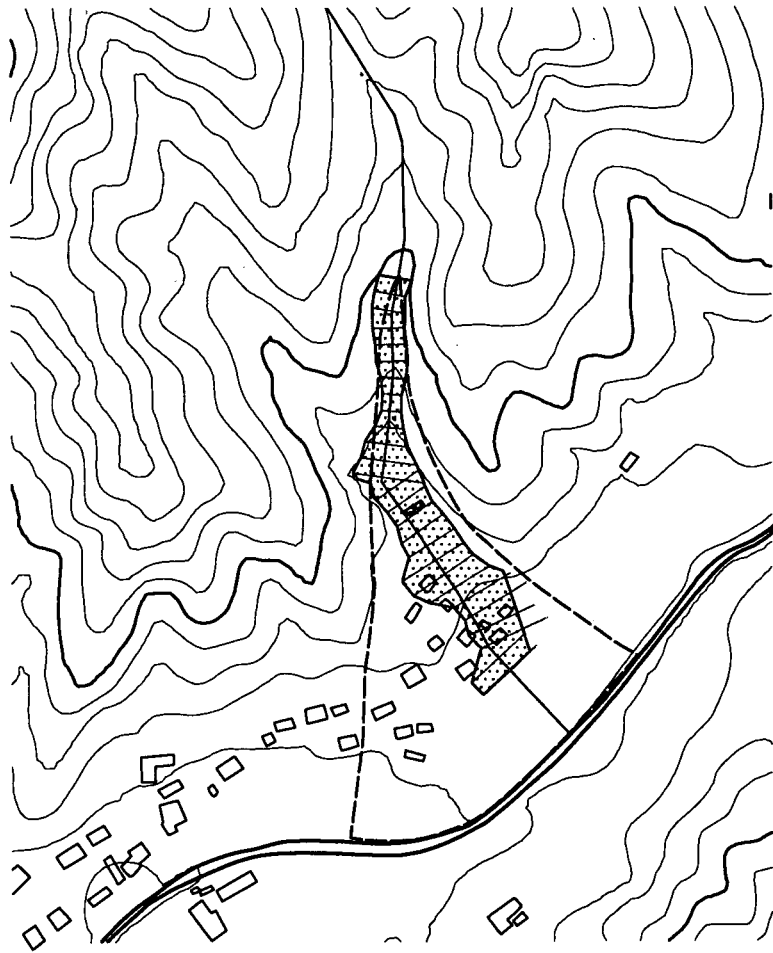
適用ケース③ L溪流 (10m)



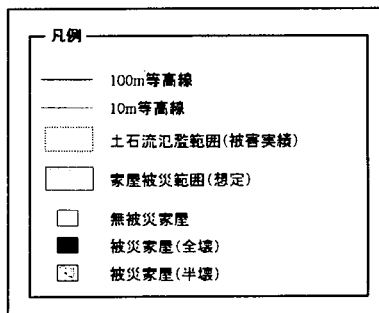
適用ケース③ M溪流 (10m)



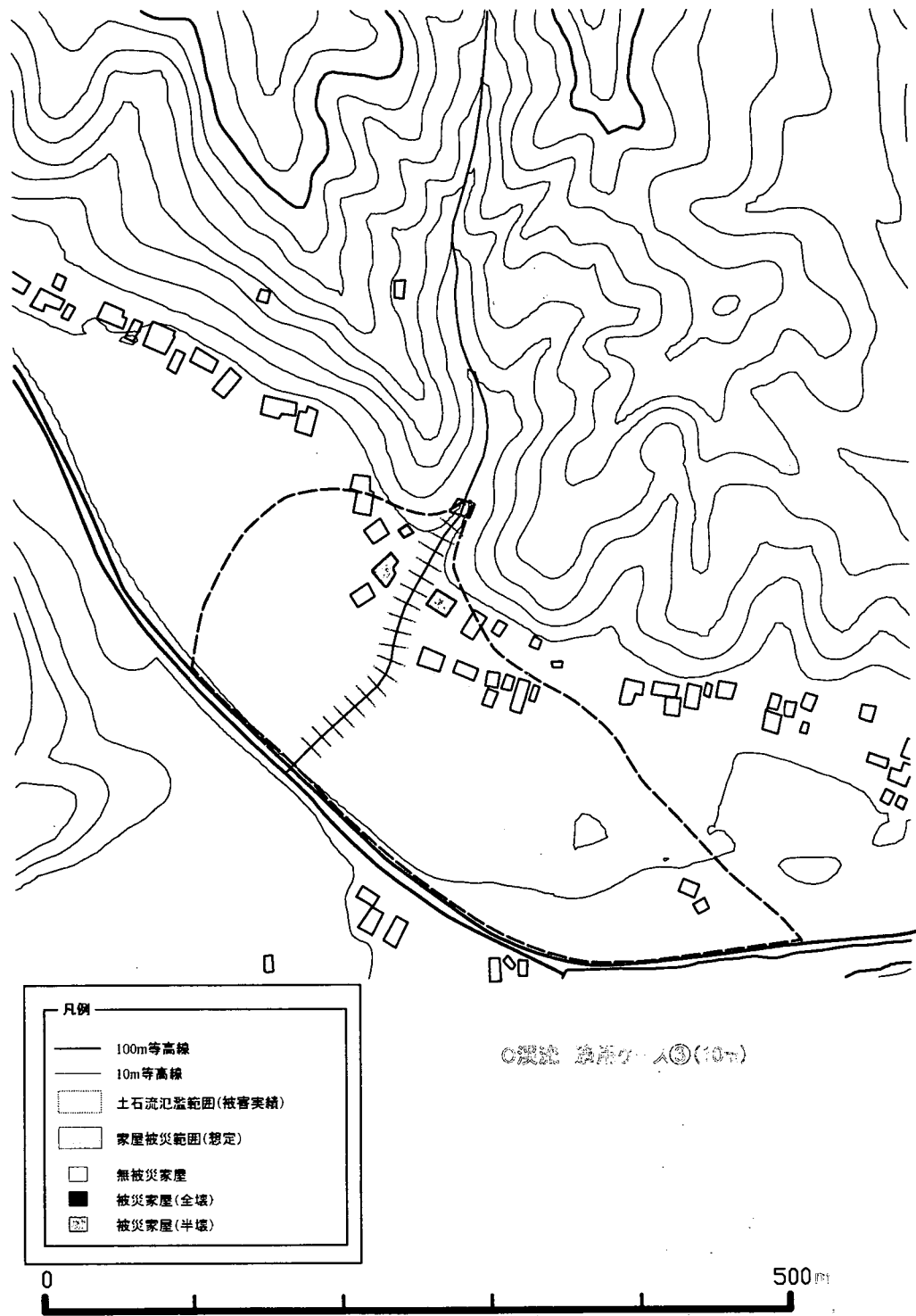
適用ケース③ N 溪流 (10m)



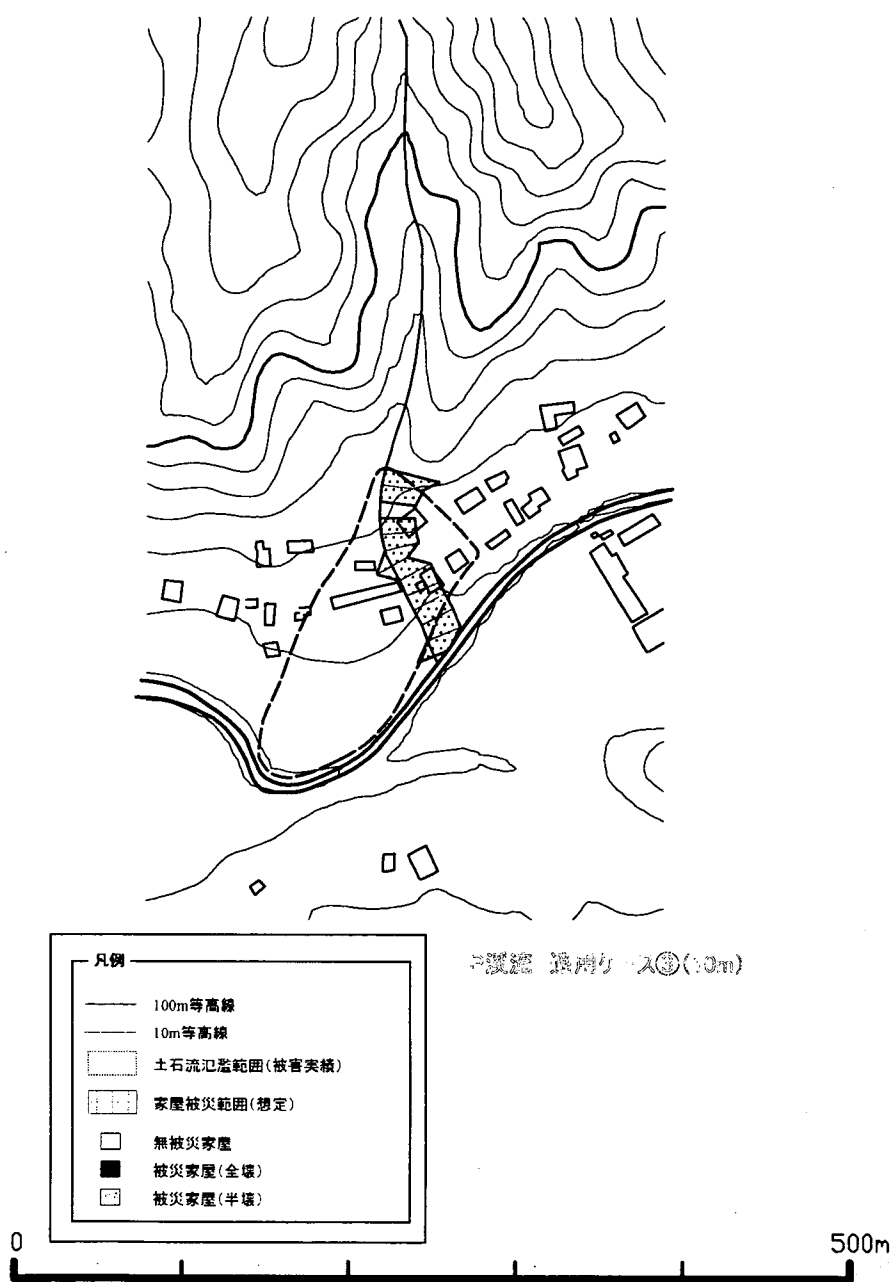
N 溪流 適用ケース③(10m)



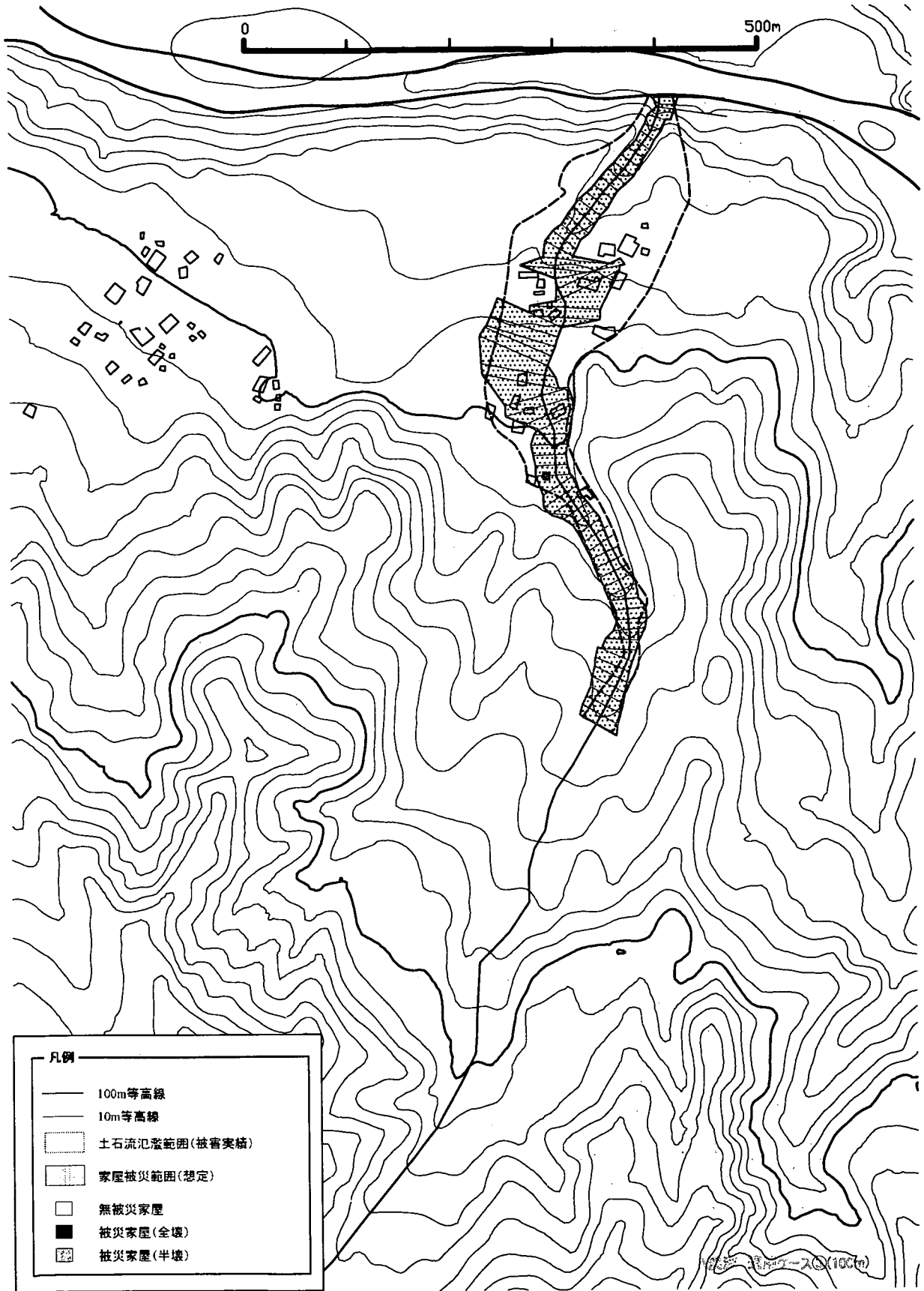
適用ケース③ 0 溪流 (10m)



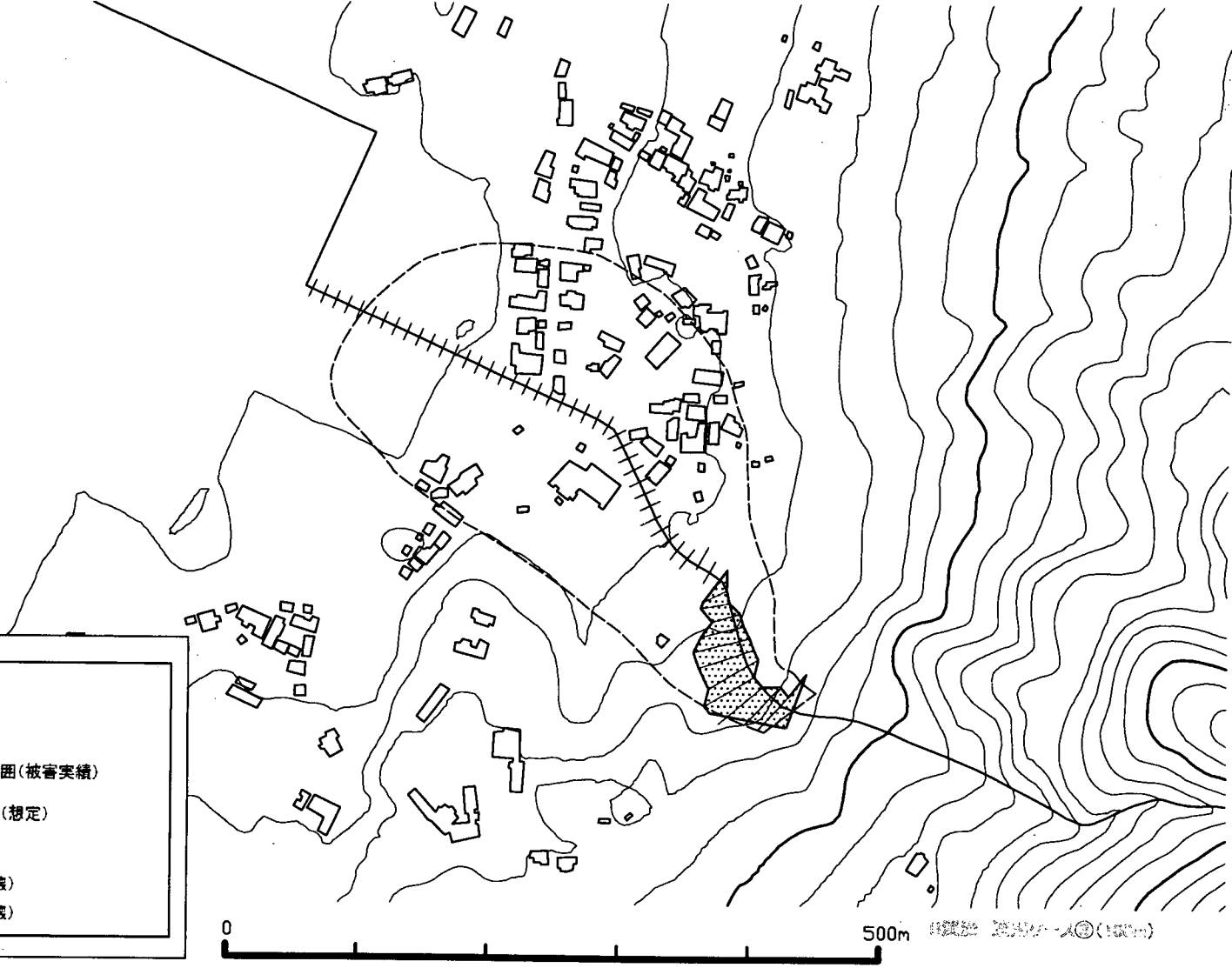
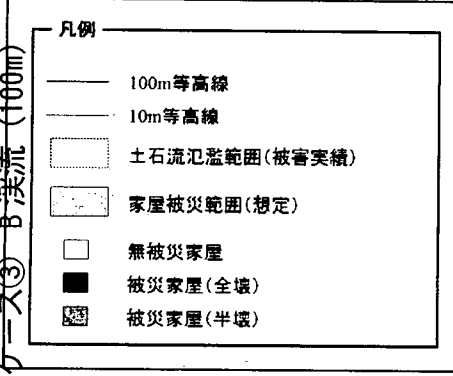
適用ケース③ P 溪流 (10m)



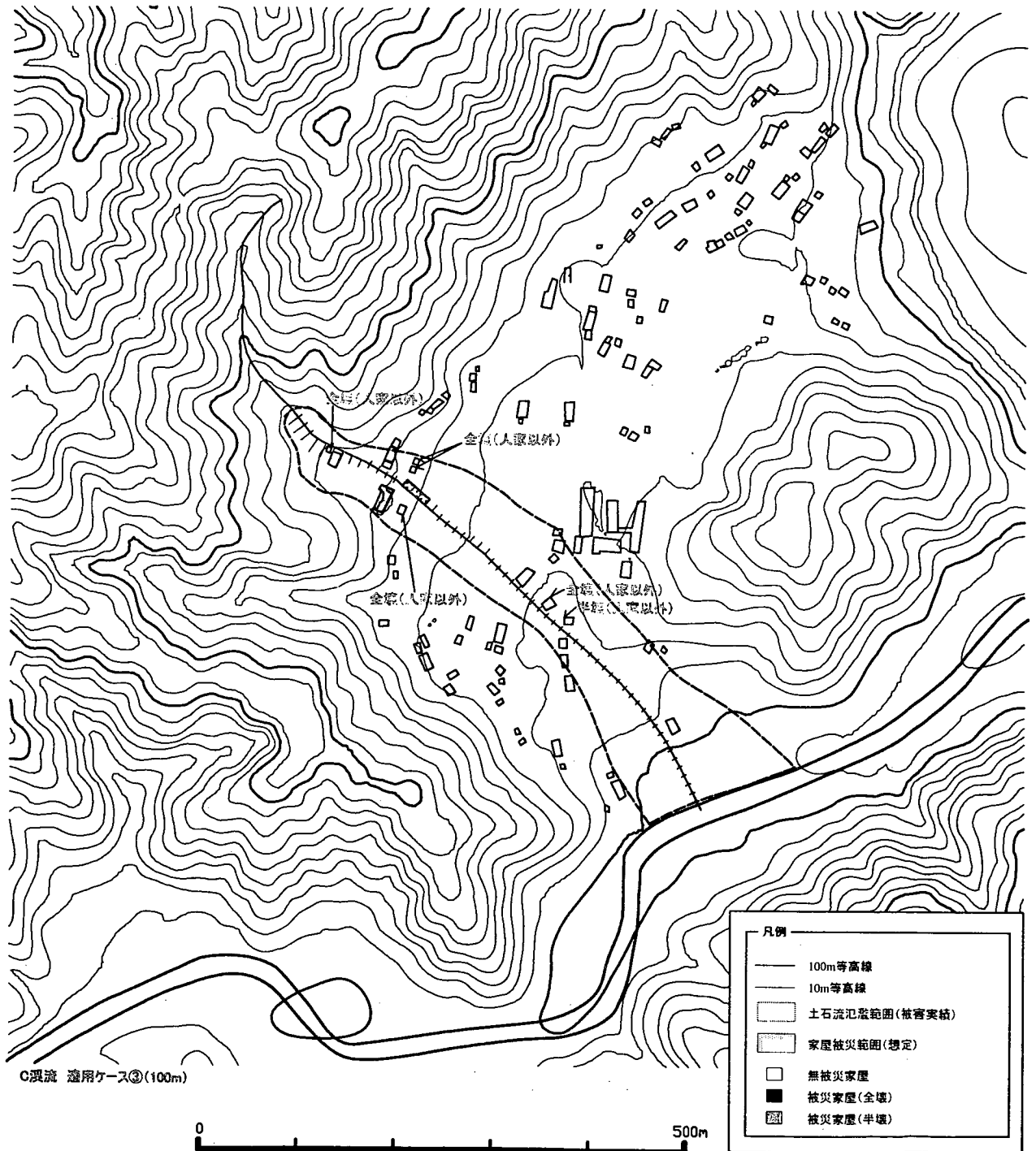
適用ケース③ A 溪流 (100m)



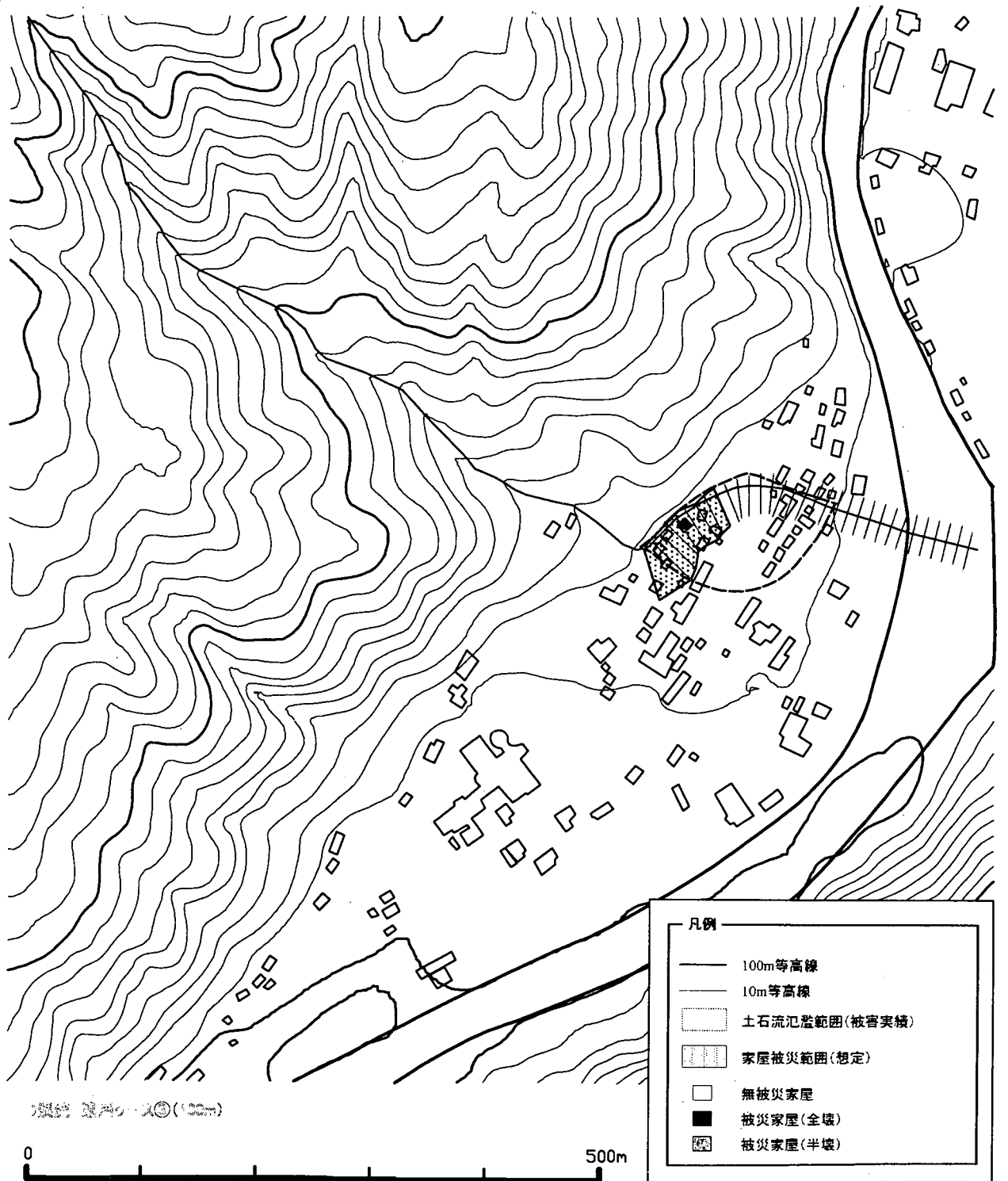
適用ケース③ B 溪流 (100m)



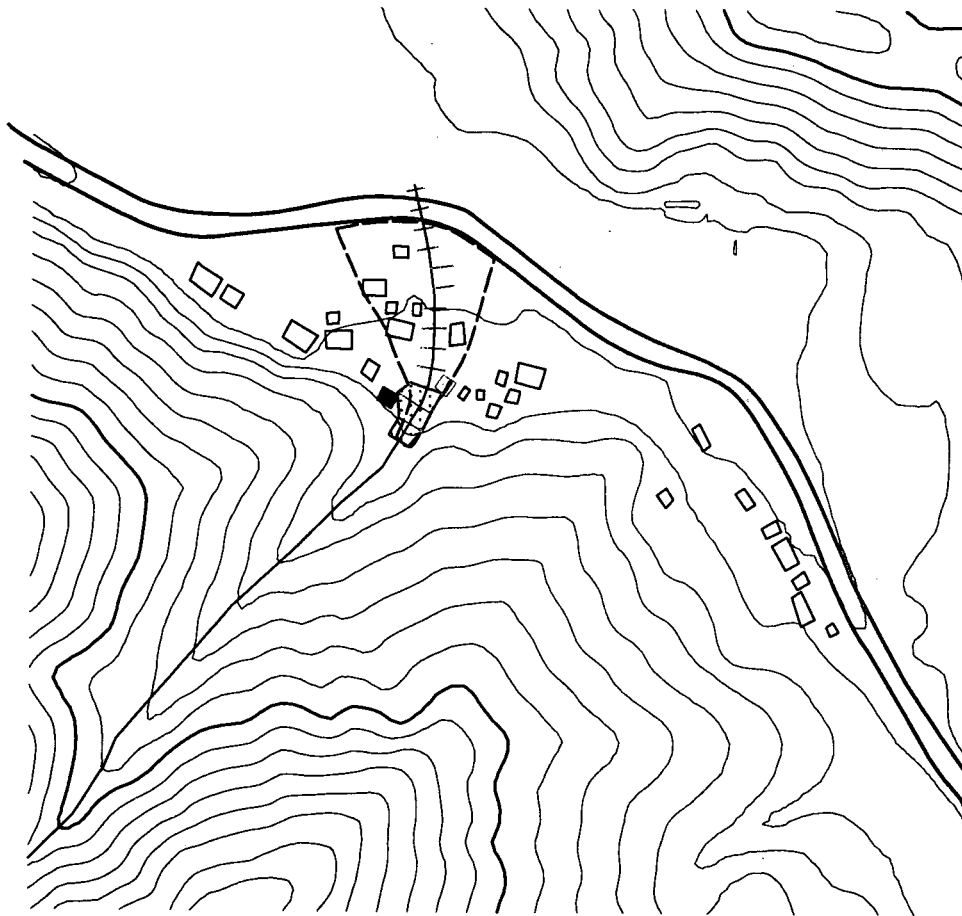
適用ケース③ C溪流 (100m)



適用ケース③ D 溪流 (100m)



適用ケース③ E 溪流 (100m)

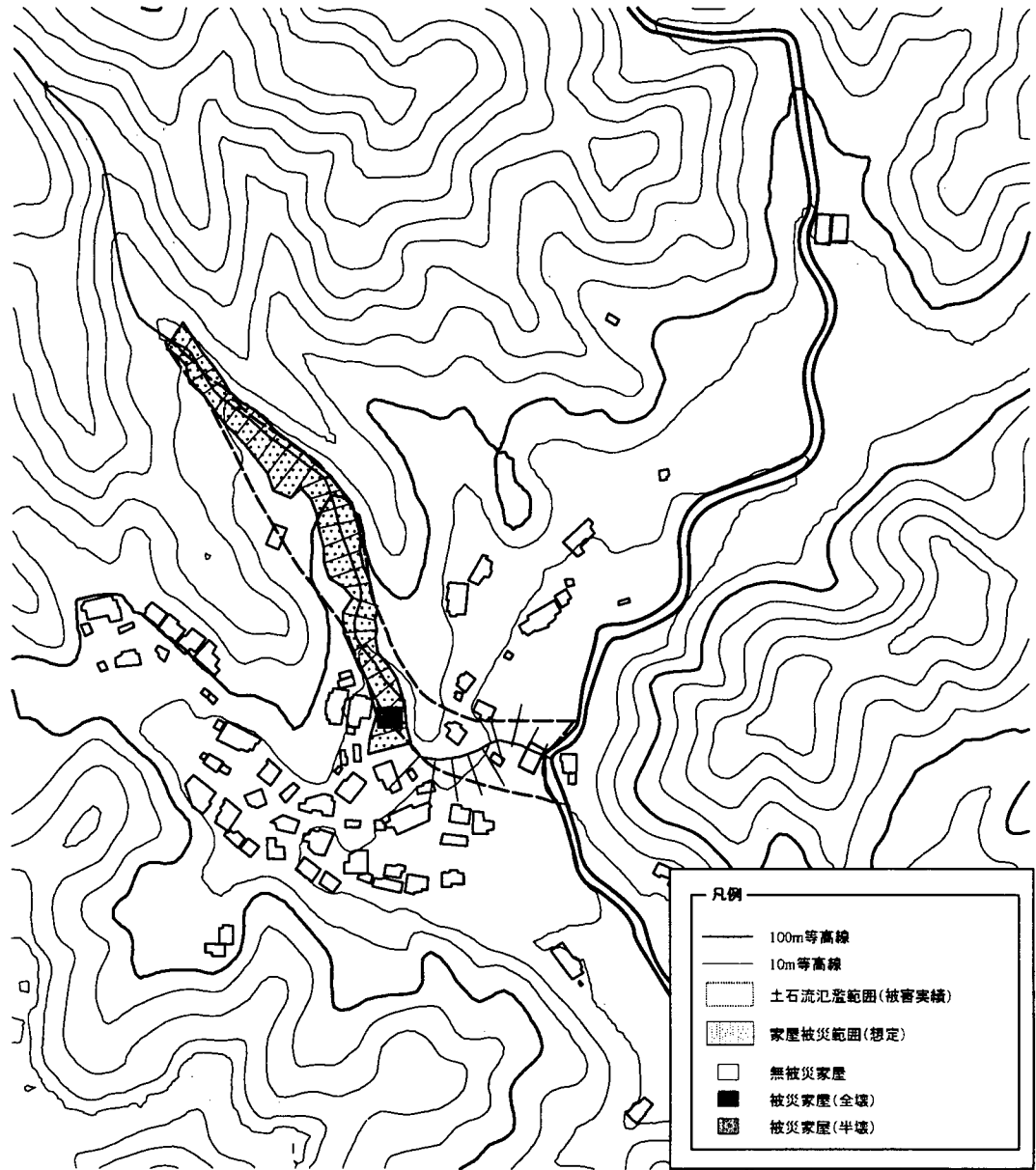


E 溪流 適用ケース③ (100m)

勾配のとり方: 上流100m

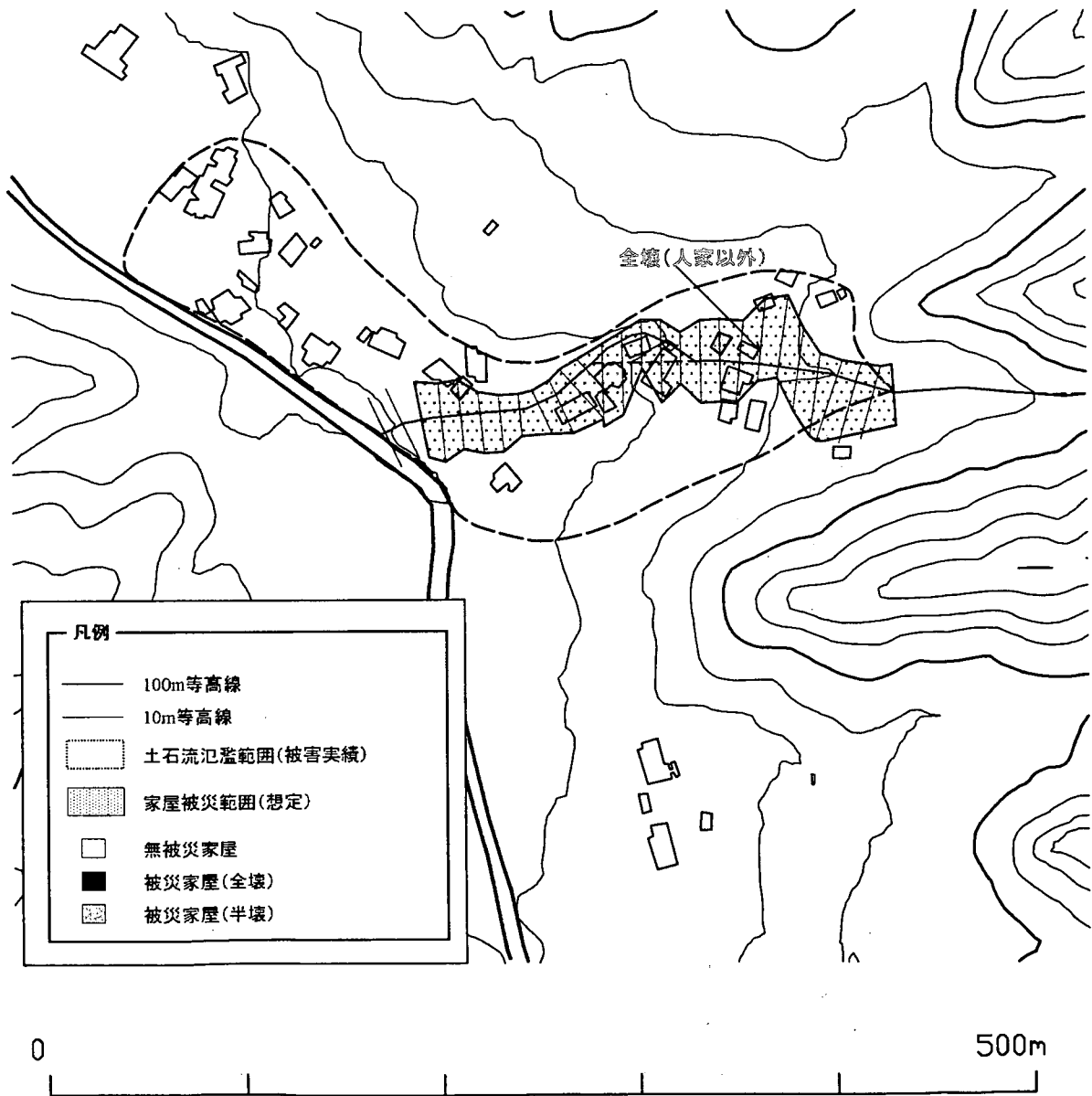


適用ケース③ F 溪流 (100m)



0 500m
 図説 適用ケース③(100m)

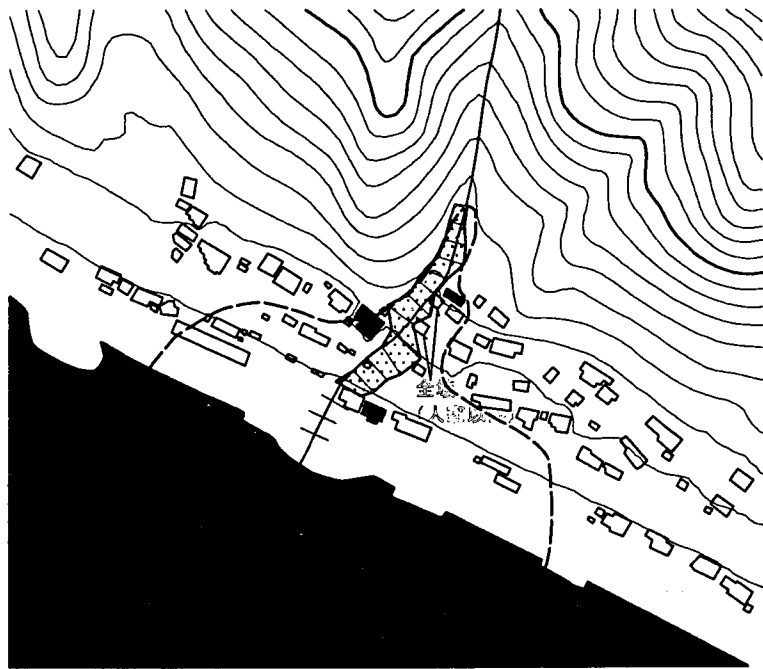
適用ケース③ G 溪流 (100m)



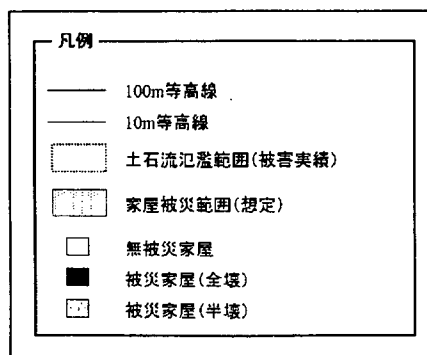
G溪流 適用ケース③(100m)

適用ケース③ H溪流 (100m)

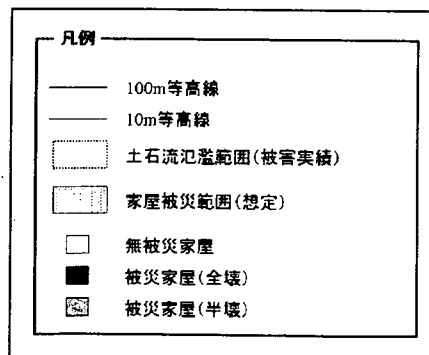
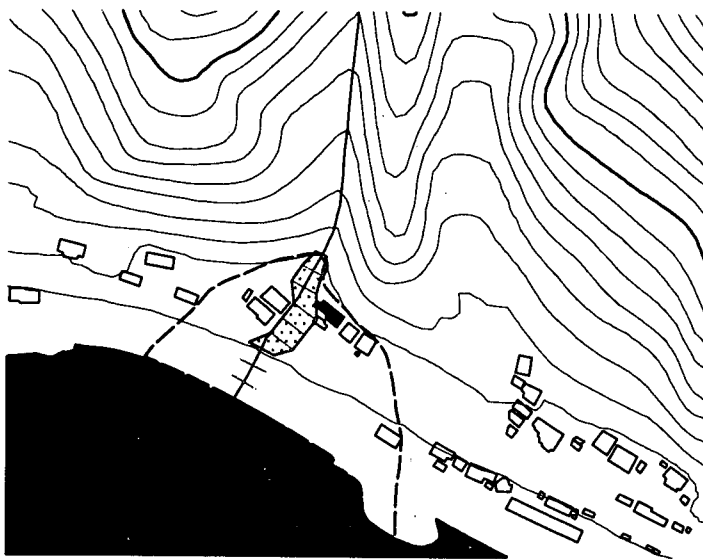
とり方: 上流100m



H溪流 適用ケース③(100m)



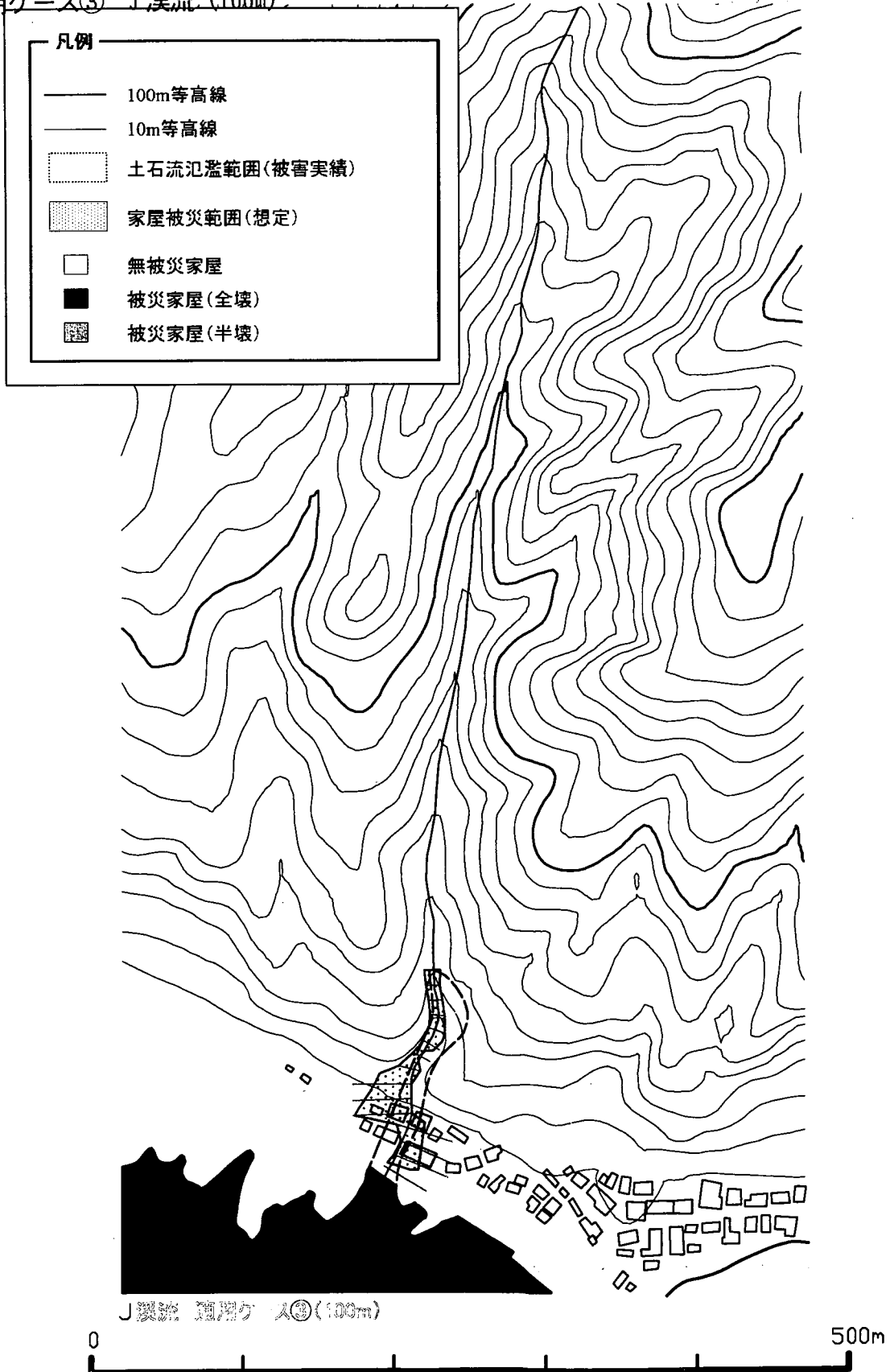
適用ケース③ Ⅰ 溪流 (100m)



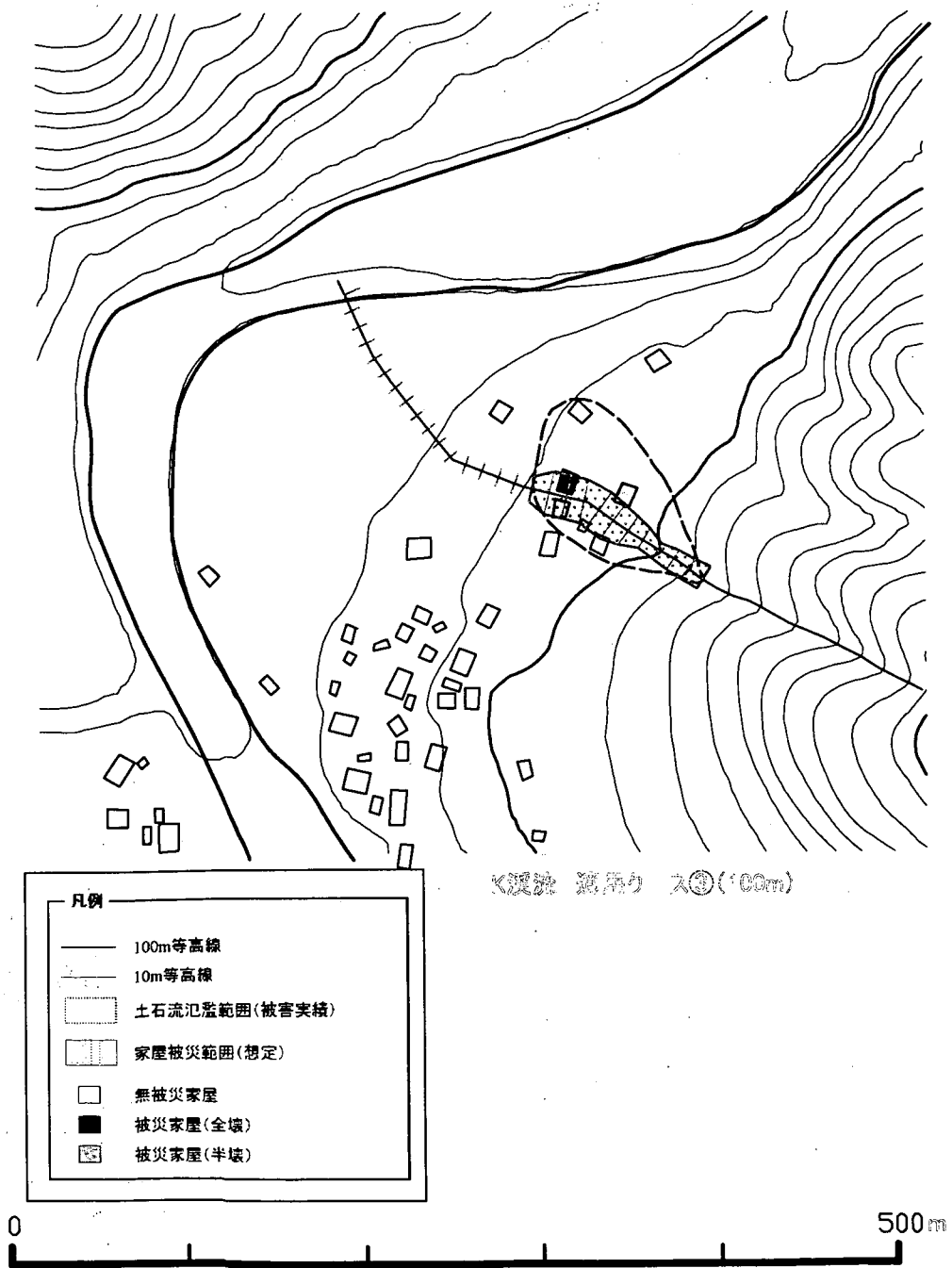
溪流 適用ケース③(100m)



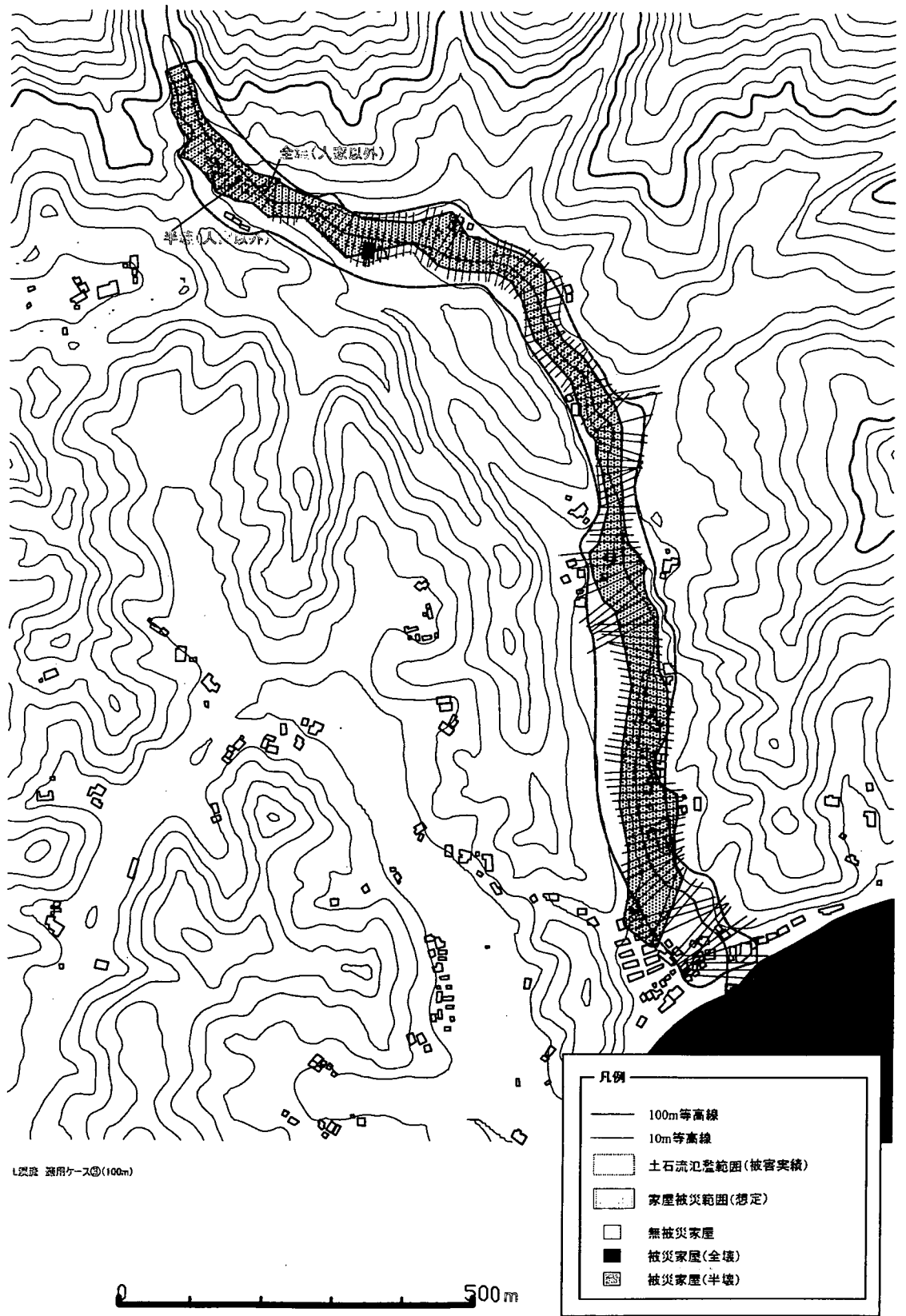
適用ケース③ 土渓流 (100m)



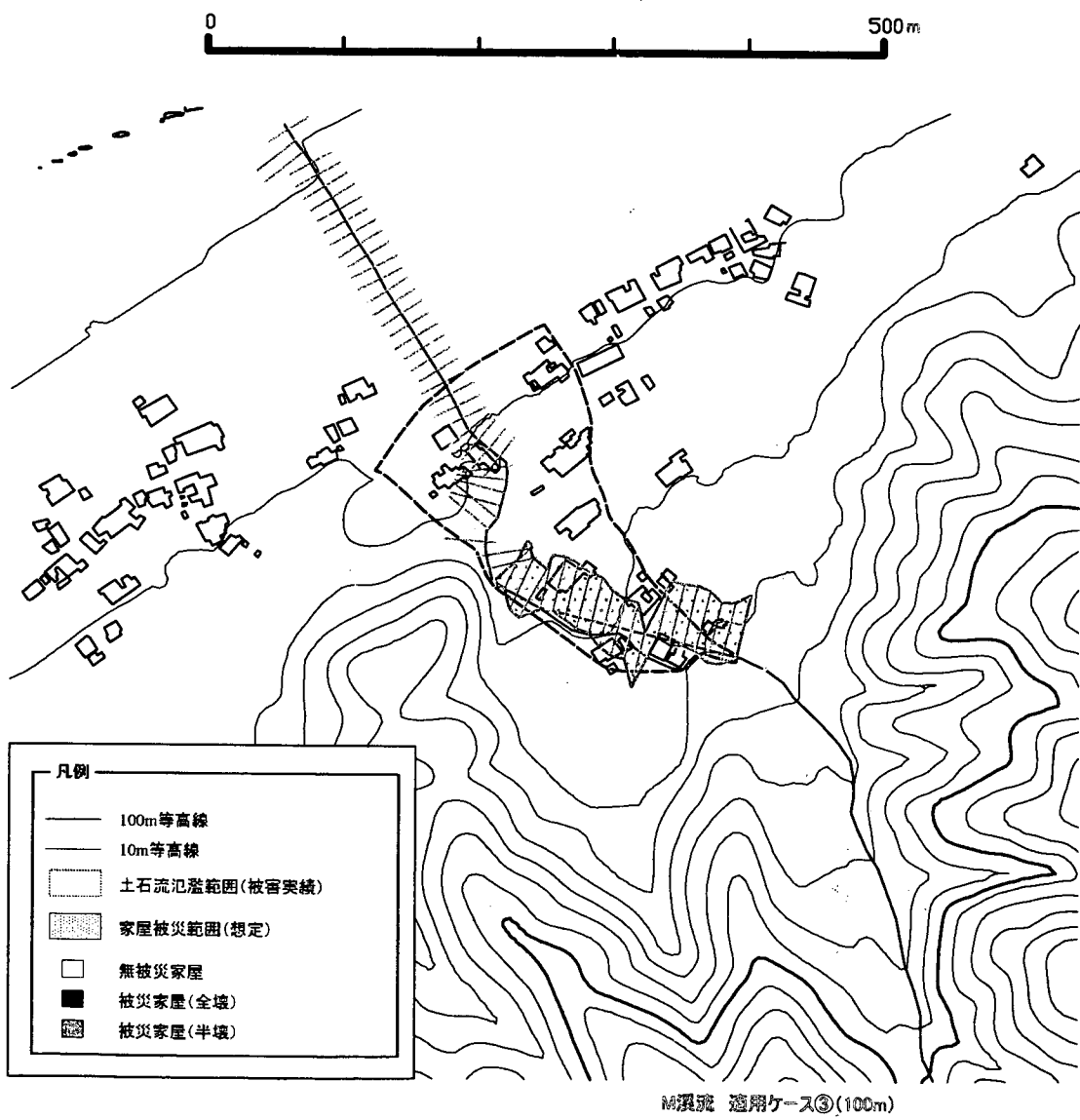
適用ケース③ K溪流 (100m)



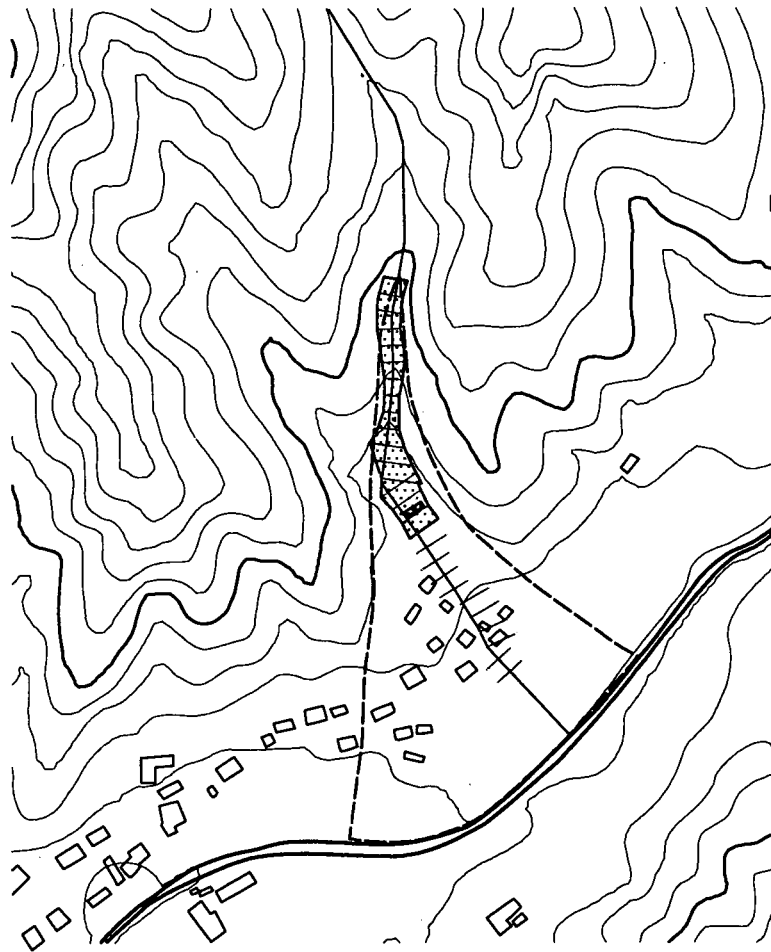
適用ケース③ L 溪流 (100m)



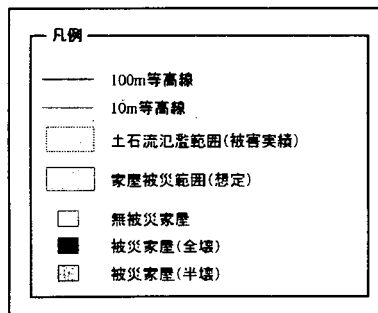
適用ケース③ M溪流 (100m)



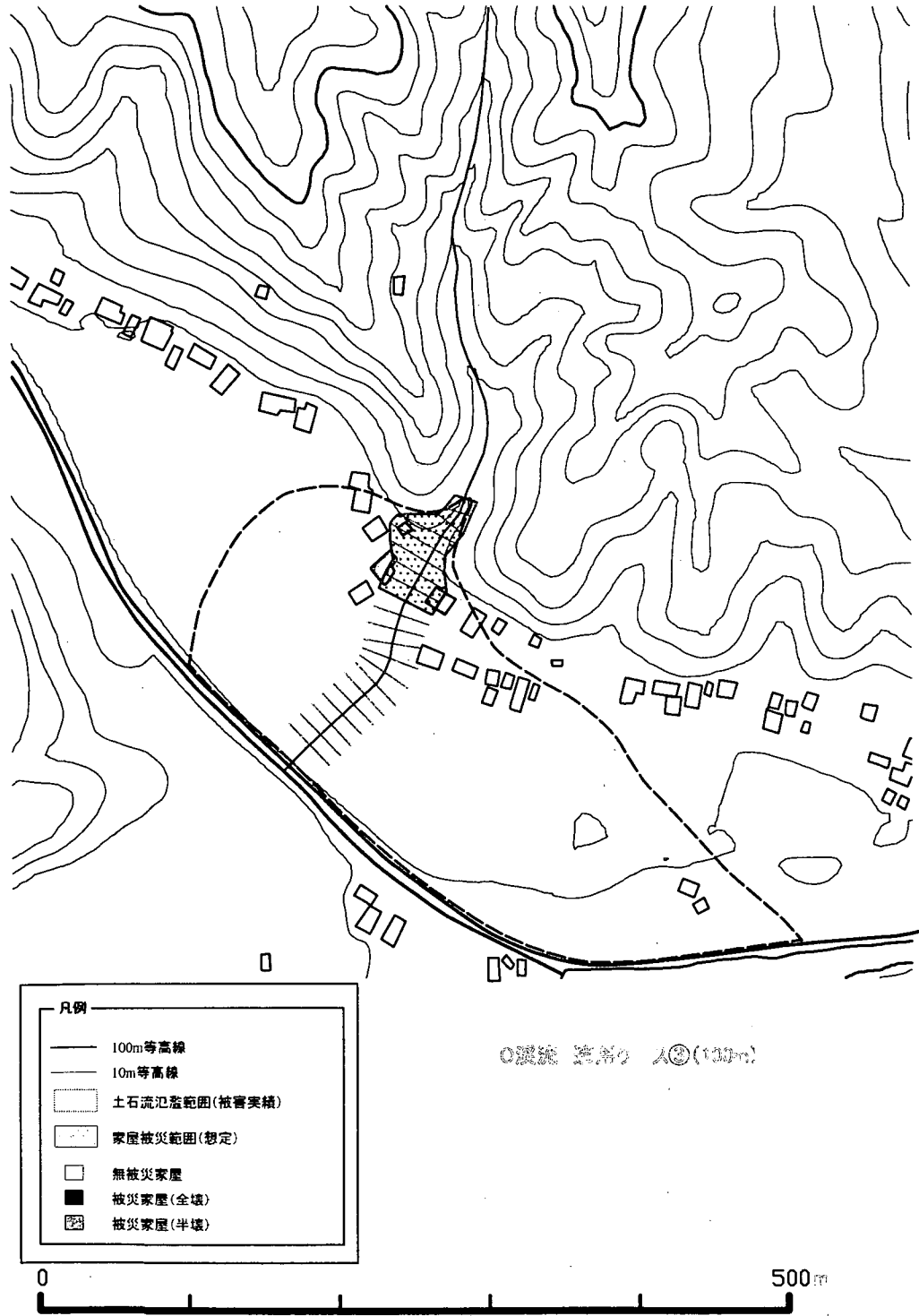
適用ケース③ N 溪流 (100m)



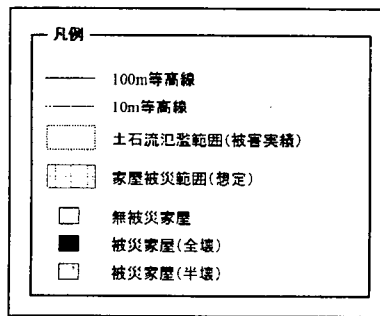
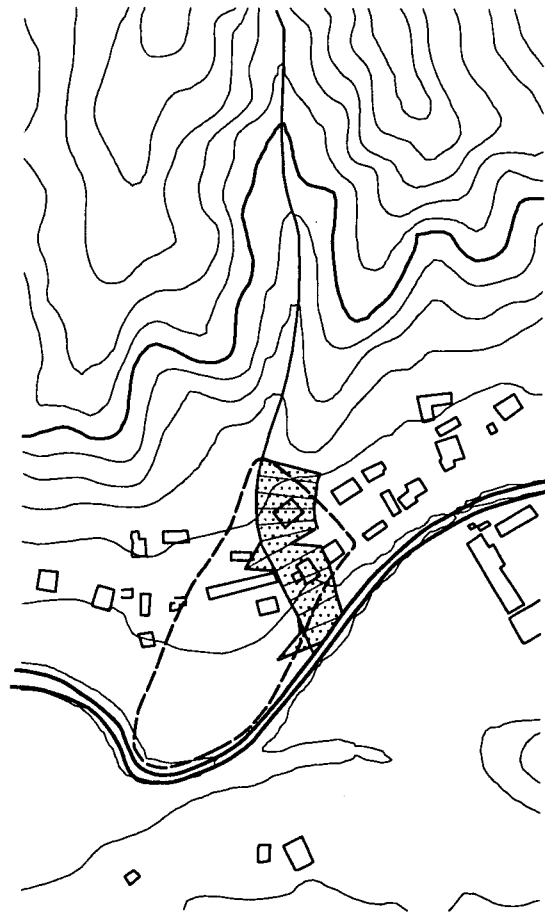
N 溪流 適用ケース③(100m)



適用ケース③ 〇溪流 (100m)



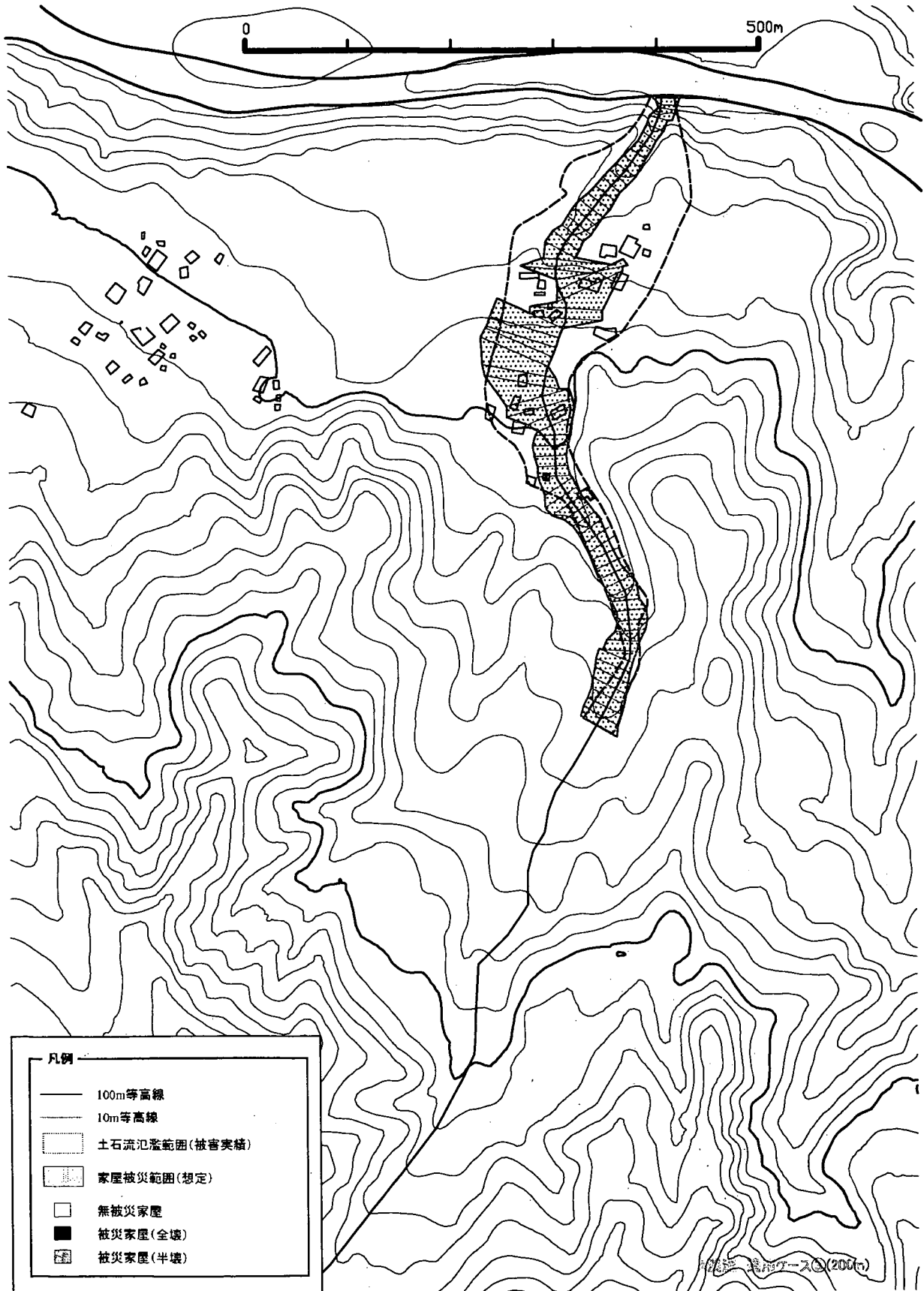
適用ケース③ P 溪流 (100m)



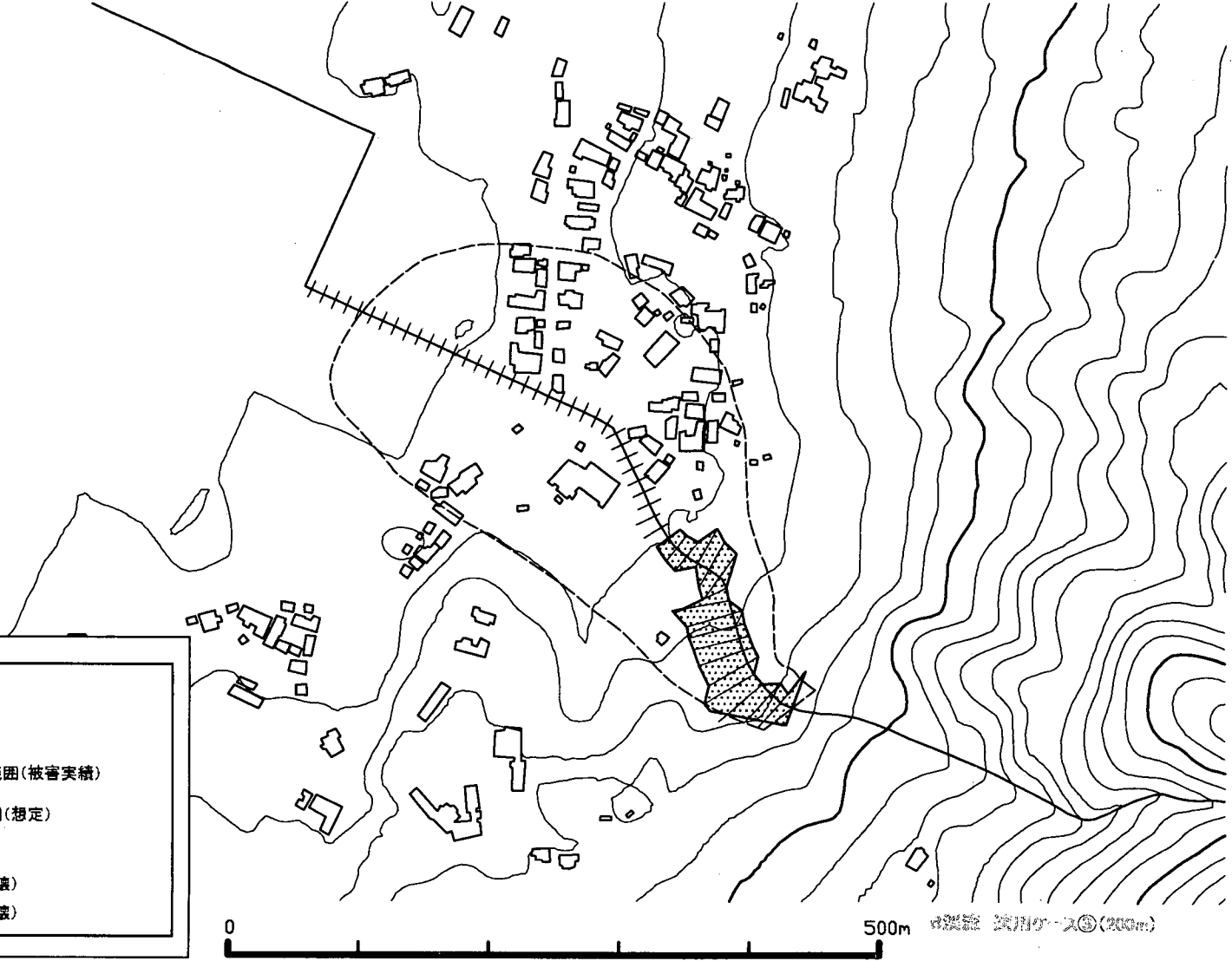
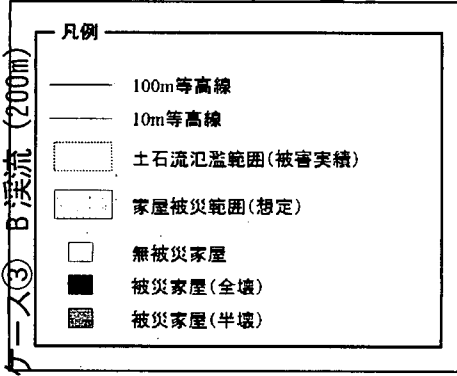
③ P 溪流 適用ケース③(100m)



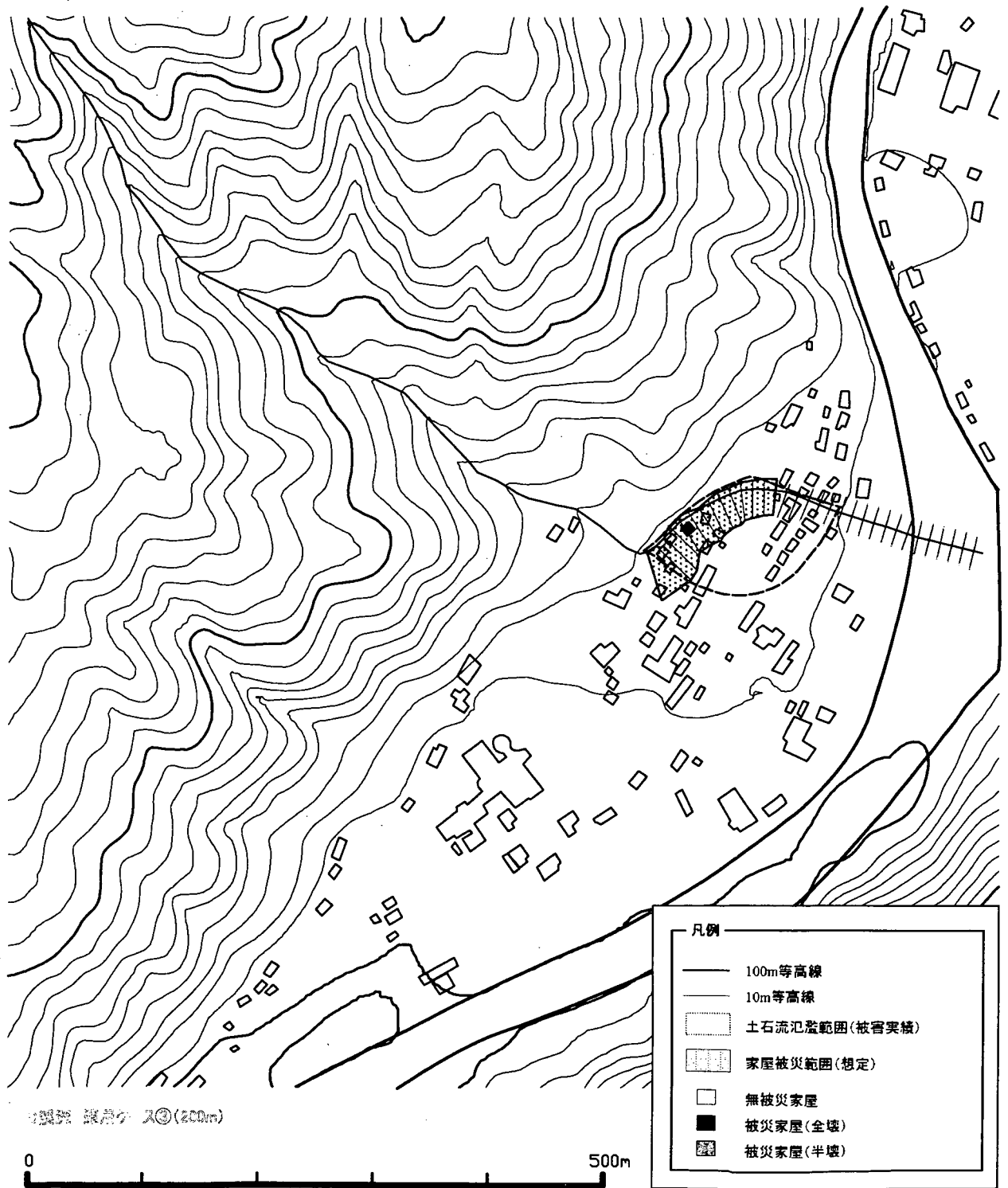
適用ケース③ A 溪流 (200m)



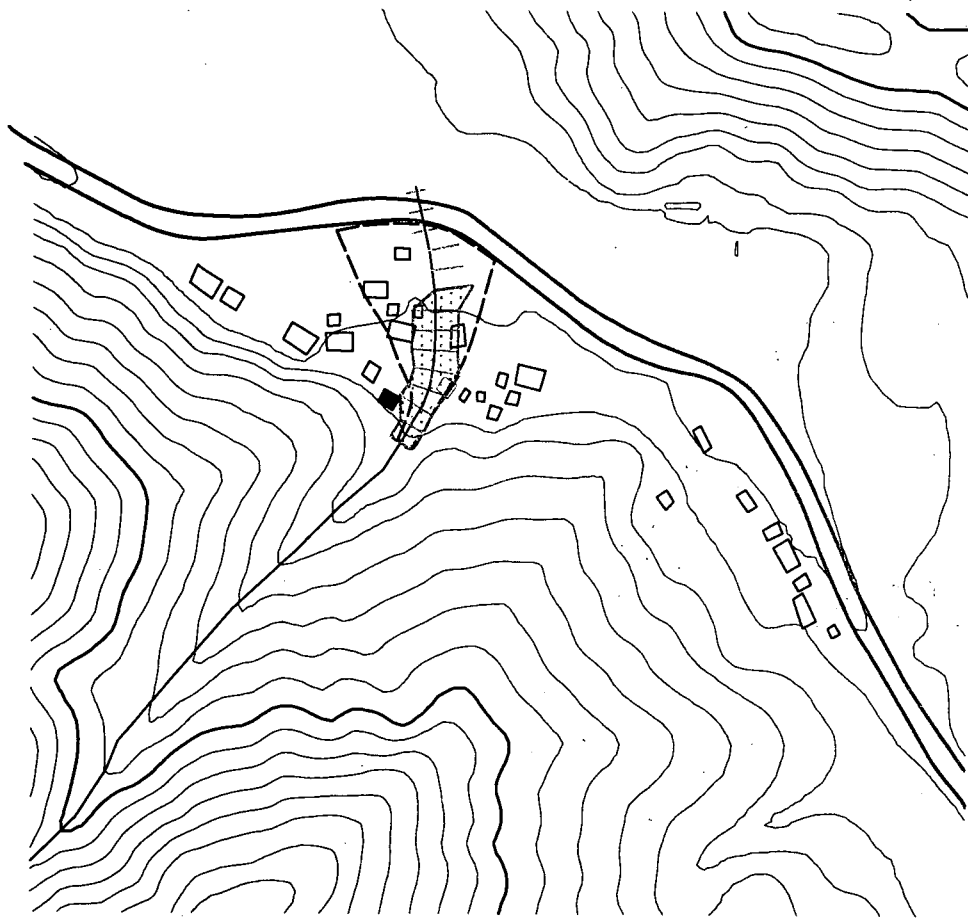
適用①②③ B 溪流 (200m)



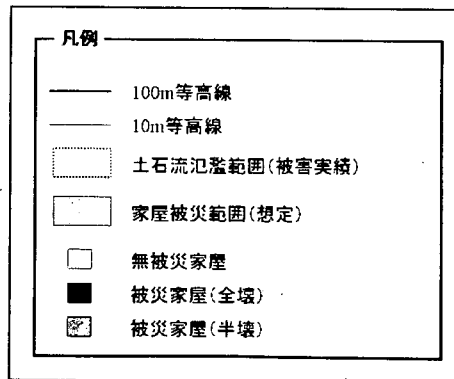
適用ケース③ D 溪流 (200m)



適用ケース③ E 溪流 (200m)



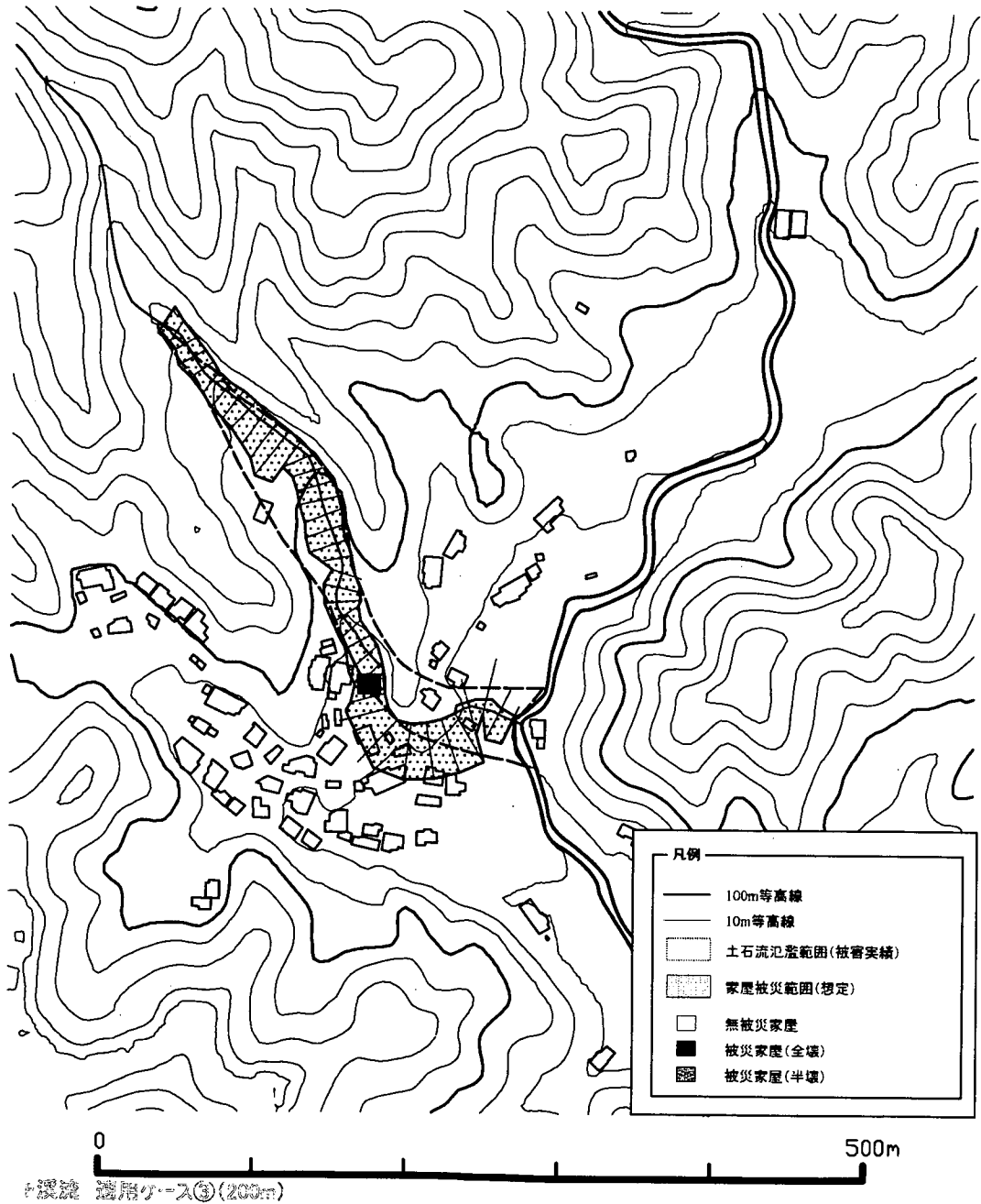
E 溪流 適用ケース③(200m)



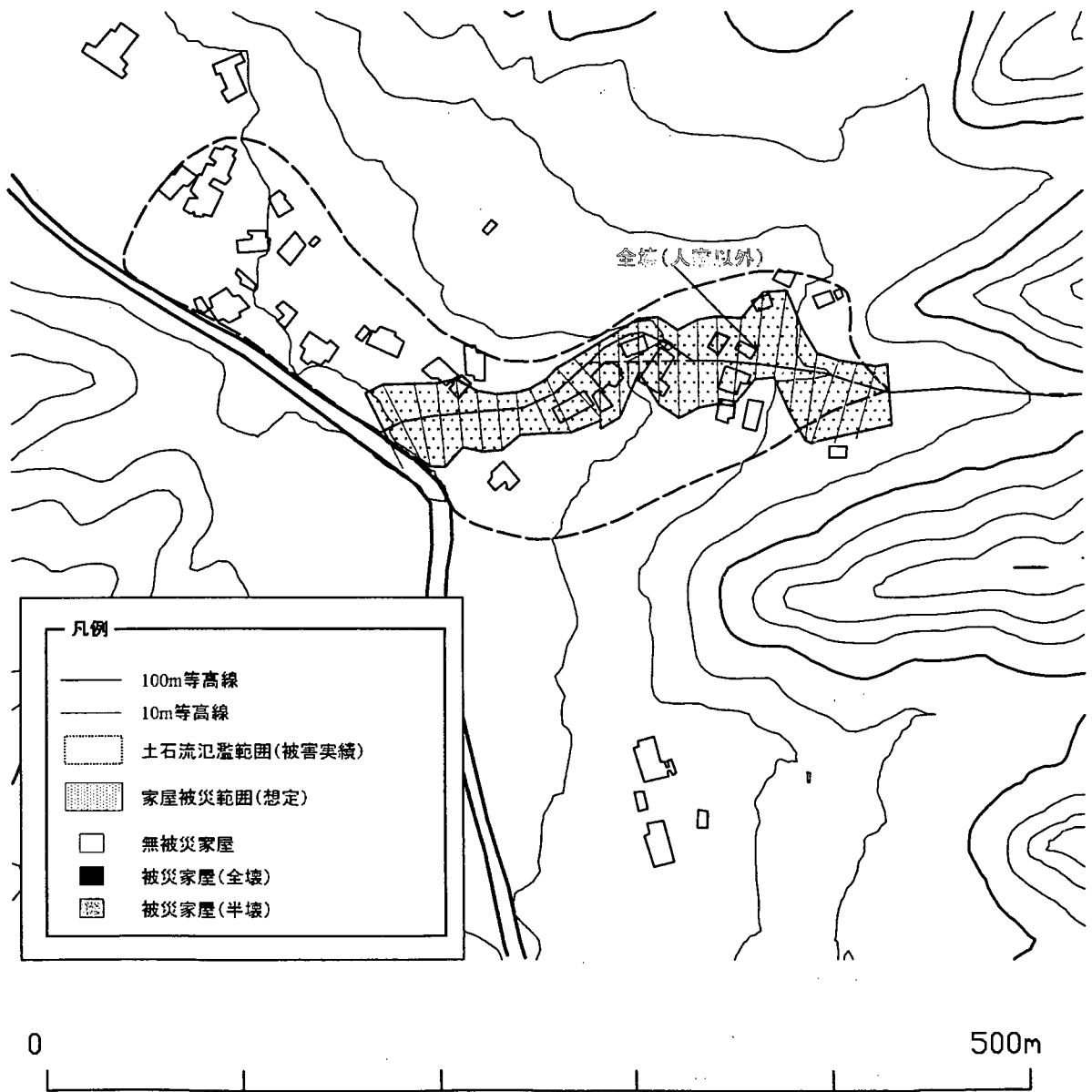
勾配のとり方：1:200



適用ケース③ F 溪流 (200m)

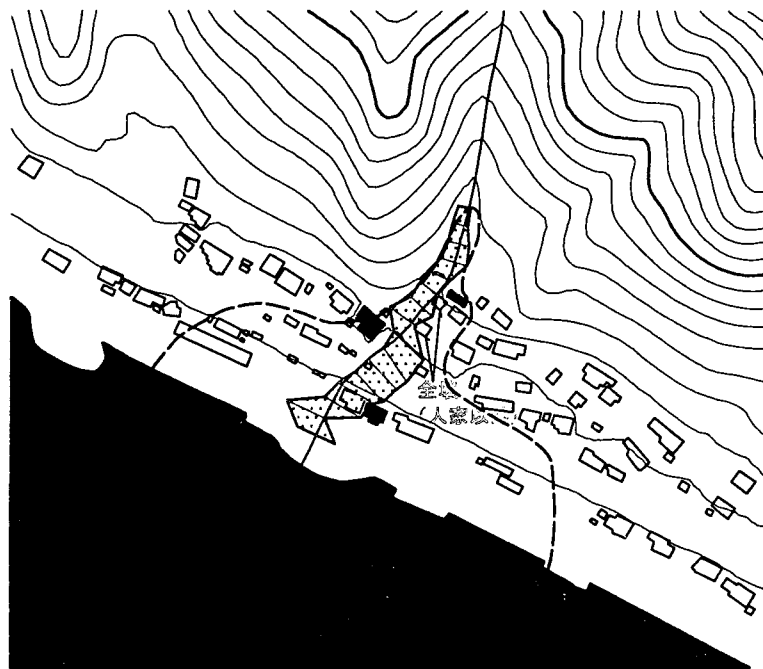


適用ケース③ G 溪流 (200m)

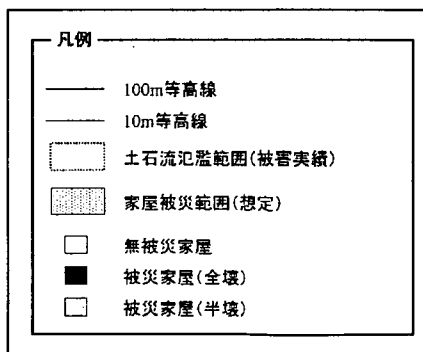


G 溪流 適用ケース③(200m)

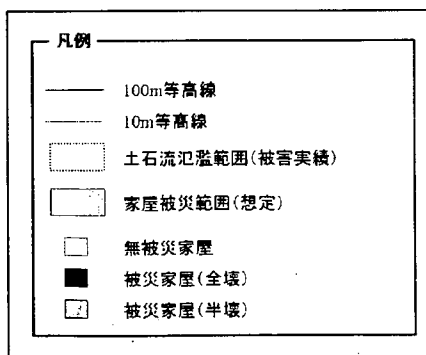
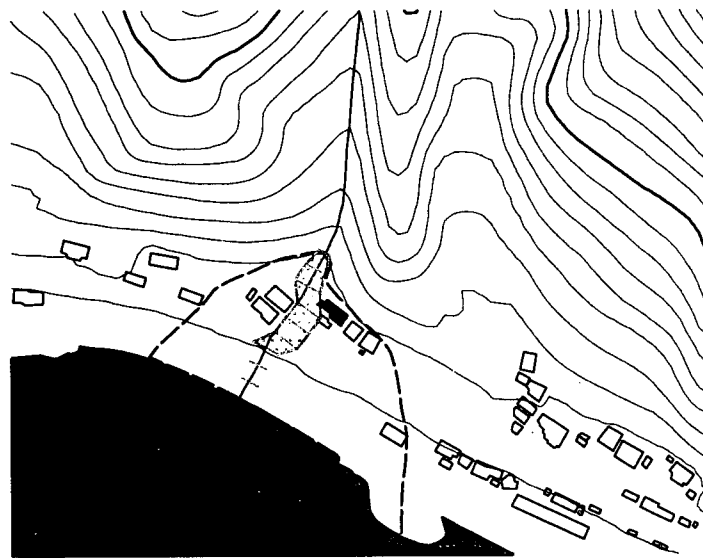
適用ケース③ H溪流 (200m)



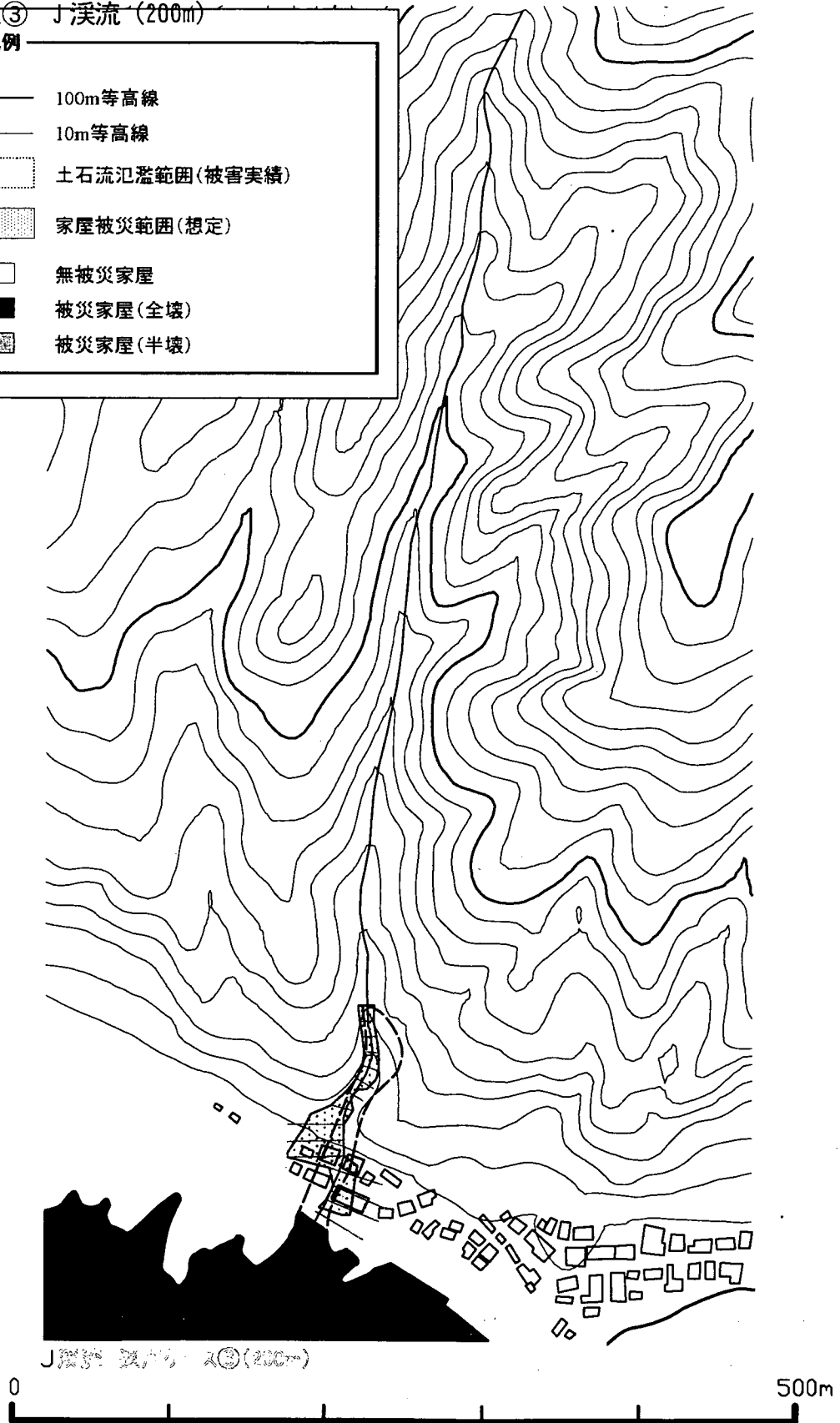
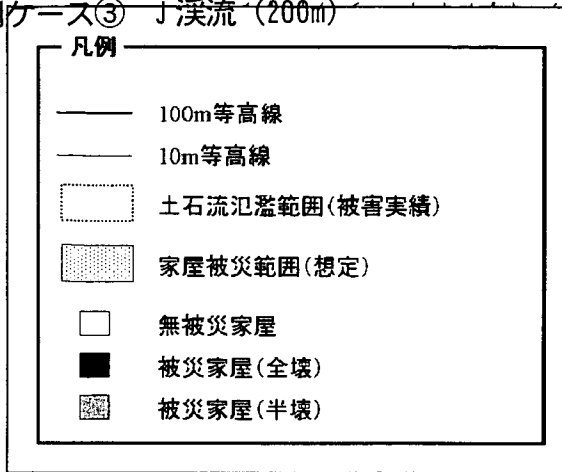
H溪流 適用ケース③(200m)



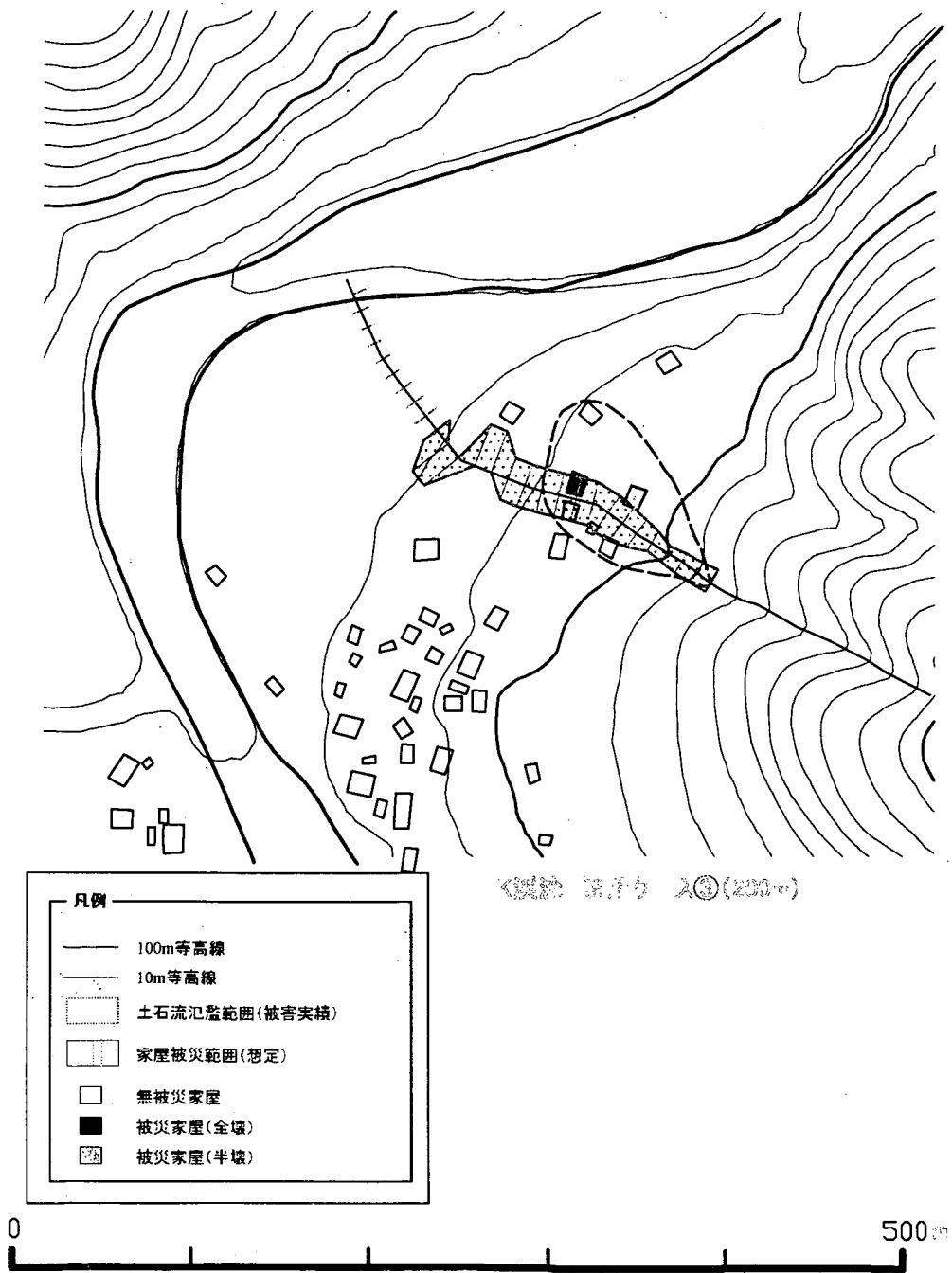
適用ケース③ | 溪流 (200m)



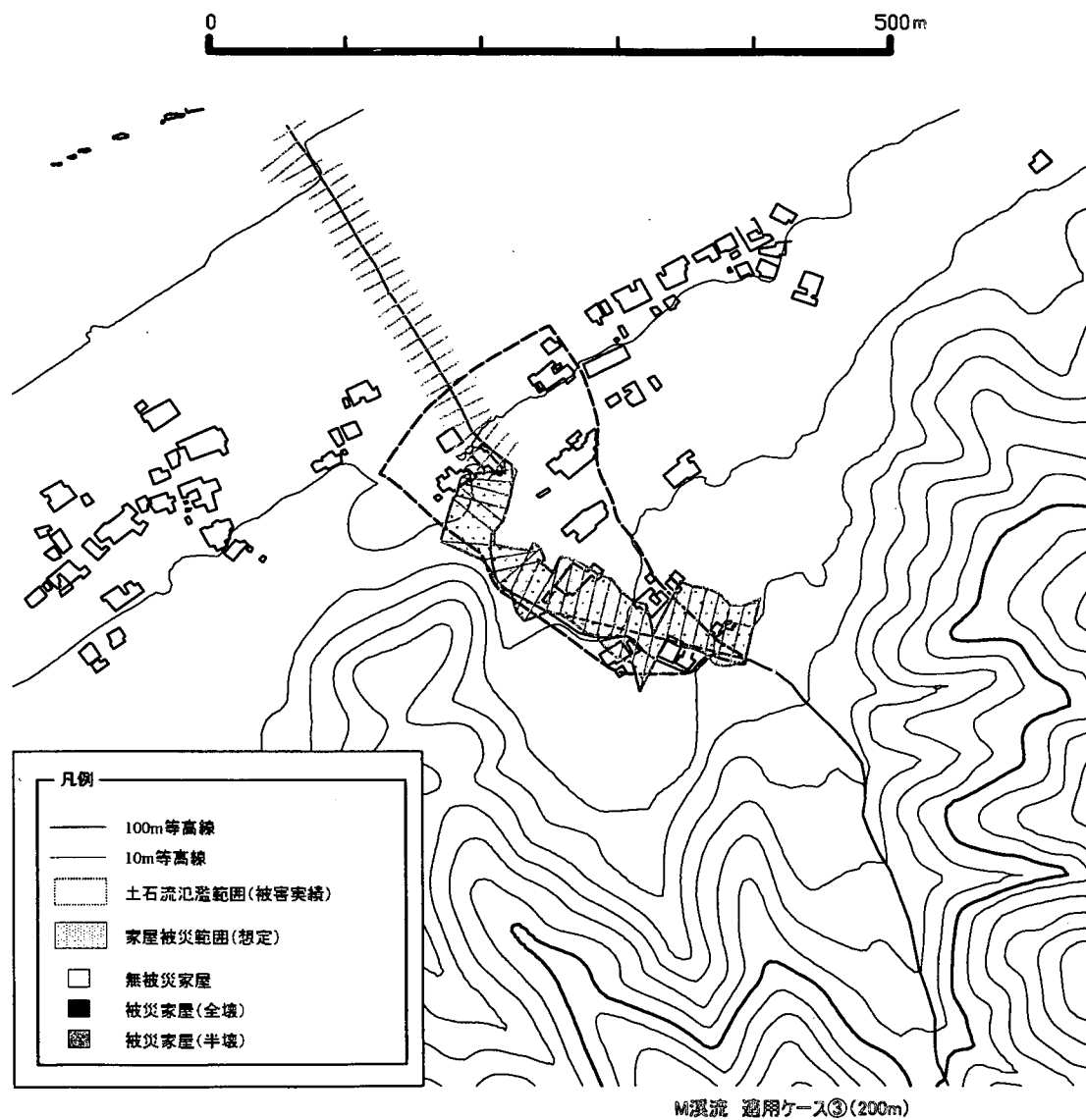
適用ケース③ J 溪流 (200m)



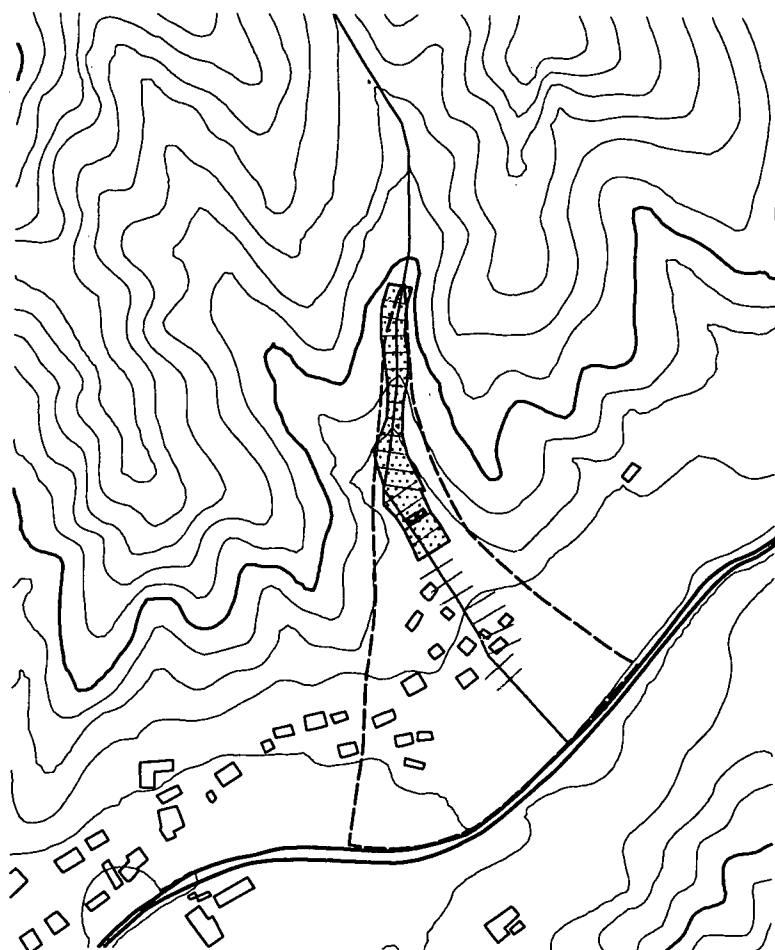
適用ケース③ K 溪流 (200m)



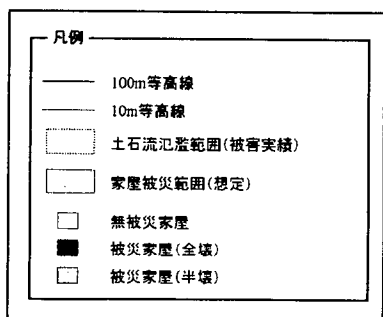
適用ケース③ M溪流 (200m)



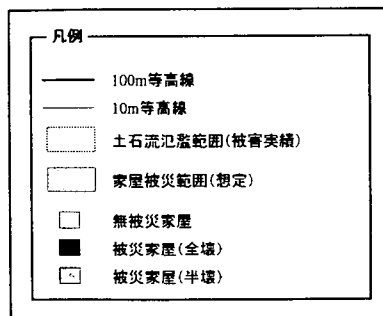
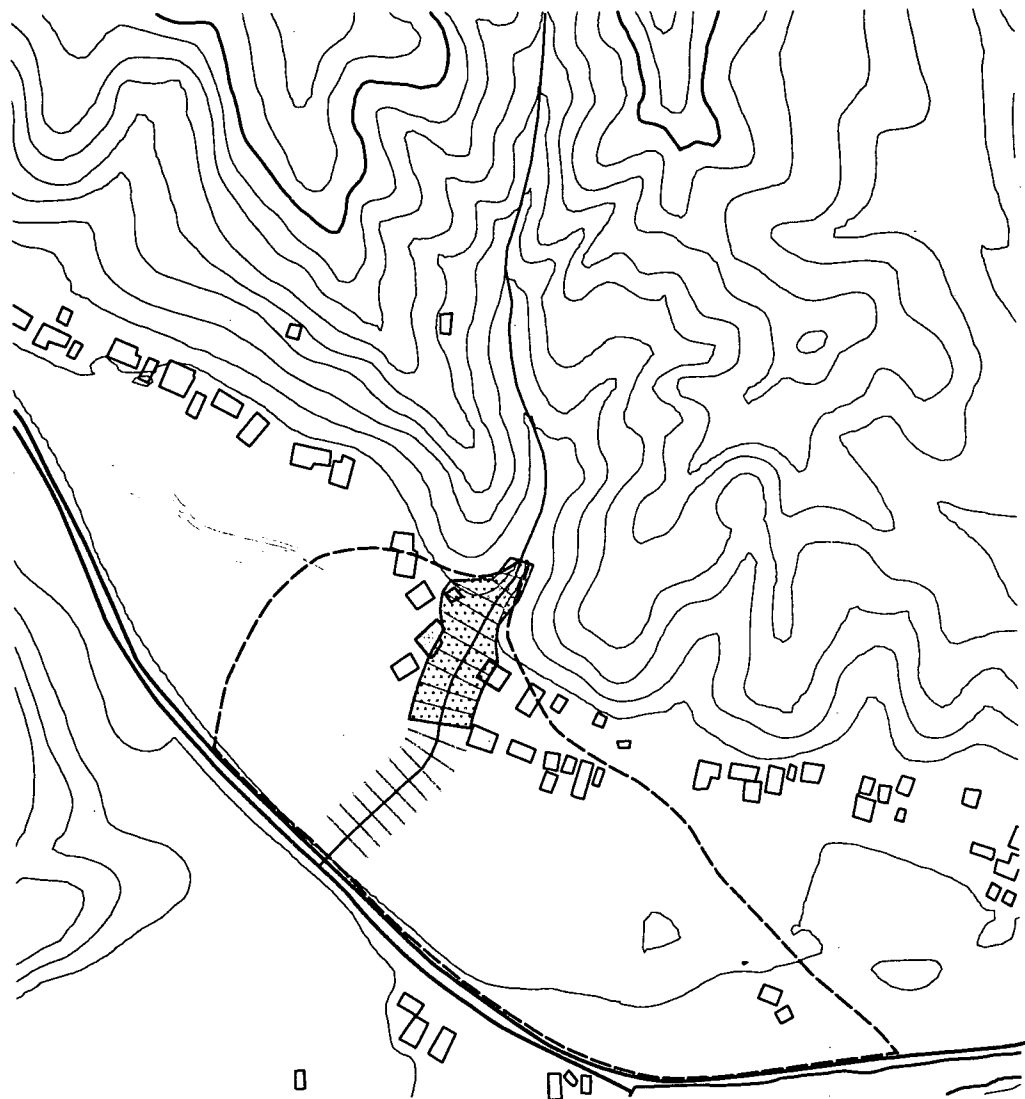
適用ケース③ N 溪流 (200m)



*観測 2004年10月(200m)



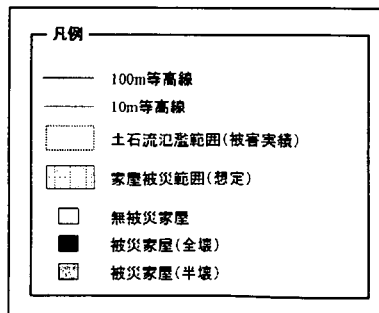
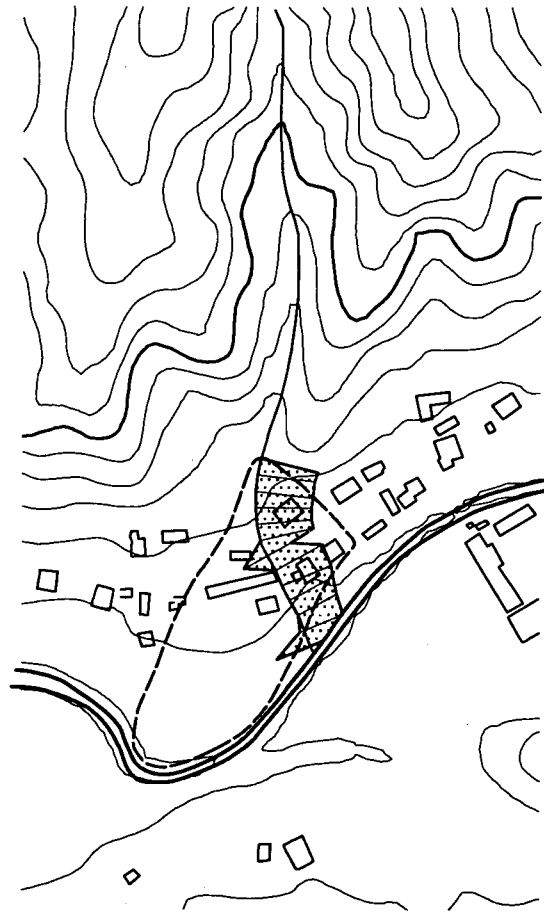
適用ケース③ 0 溪流 (200m)



0 溪流 (200m)



適用ケース③ P 溪流 (200m)



P 溪流 適用ケース③(200m)

